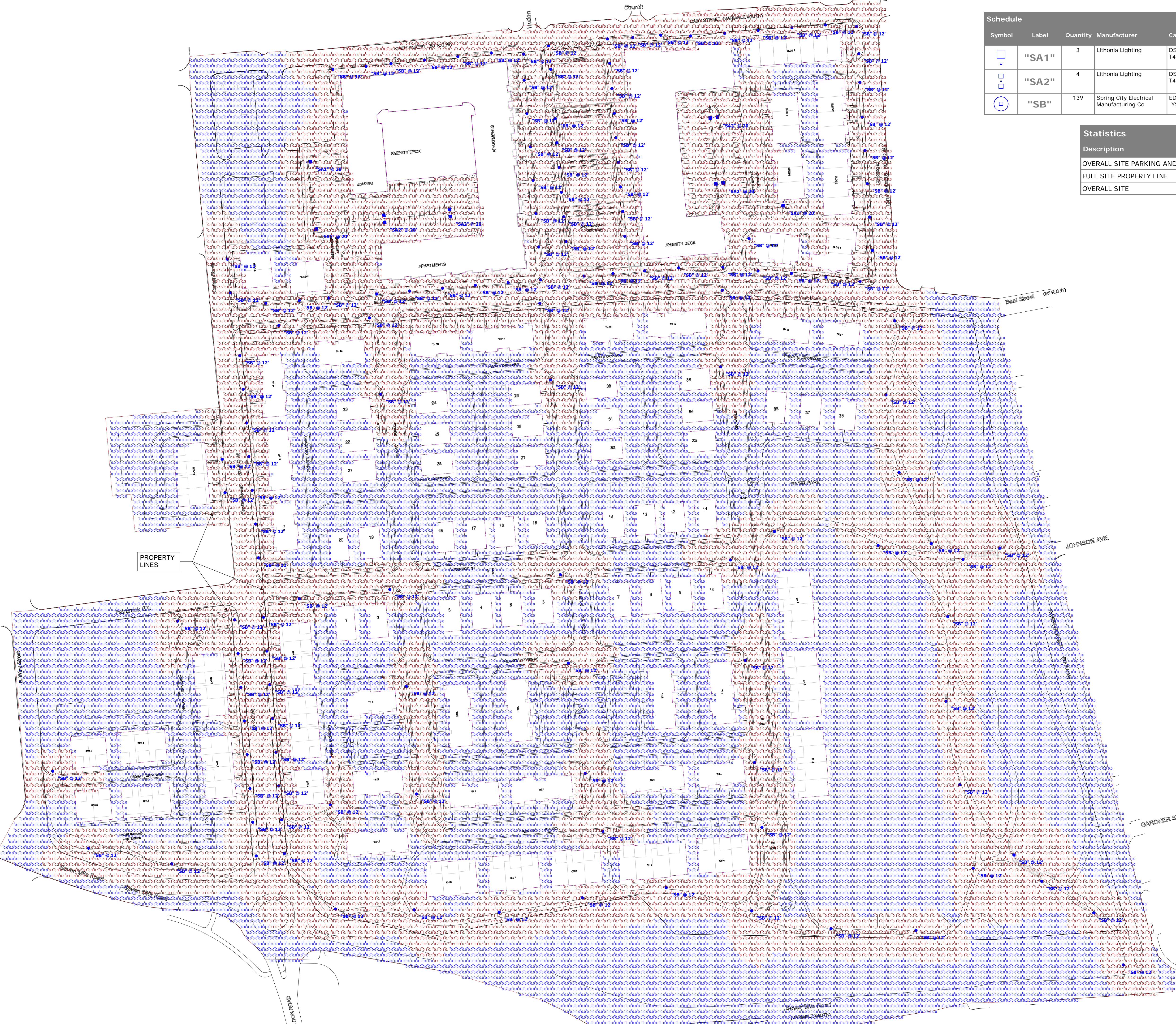




80311 - NORTHVILLE SITE PHOTOMETRIC



Symbol	Label	Quantity	Manufacturer	Catalog Number	Description	Number Lamps	Lumens Per Lamp	Light Loss Factor	Wattage
□	"SA1"	3	Lithonia Lighting	DSX1 LED P8 35K 80CRI TAM HS	D-Series Size 1 Area Luminaire P8 Performance Package 3500K CCT 80 CRI Type 4 Medium House-side Shield	1	22014	0.85	215.7732
□	"SA2"	4	Lithonia Lighting	DSX1 LED P8 35K 80CRI TAM	D-Series Size 1 Area Luminaire P8 Performance Package 3500K CCT 80 CRI Type 4 Medium	1	25590	0.85	431.54
○	"SB"	139	Spring City Electrical Manufacturing Co	EDM-LE80B-2G2-27-CR3-YSDP	Formed aluminum housing, seeded acrylic lens	1	8607	0.85	80.61

Statistics							
Description	Symbol	Avg	Max	Min	Max/Min	Avg/Min	NOTES
OVERALL SITE PARKING AND DRIVES		0.9 fc	9.7 fc	0.0 fc	N/A	N/A	
FULL SITE PROPERTY LINE	+	0.7 fc	5.3 fc	0.0 fc	N/A	N/A	
OVERALL SITE	+	0.5 fc	10.0 fc	0.0 fc	N/A	N/A	

Plan View Scale: 1" = 80'



Scale Not to Scale Drawing No. 80311 - NORTHVILLE SITE PHOTOMETRIC



### A.3 Street Lights

**Specifications**  
 Edgewater – Medium Filter  
 85 Watt Induction Light Source  
 120 Volts  
 3000K color temp

**Dimensions:**  
 Diameter: 20"  
 Height: 34"

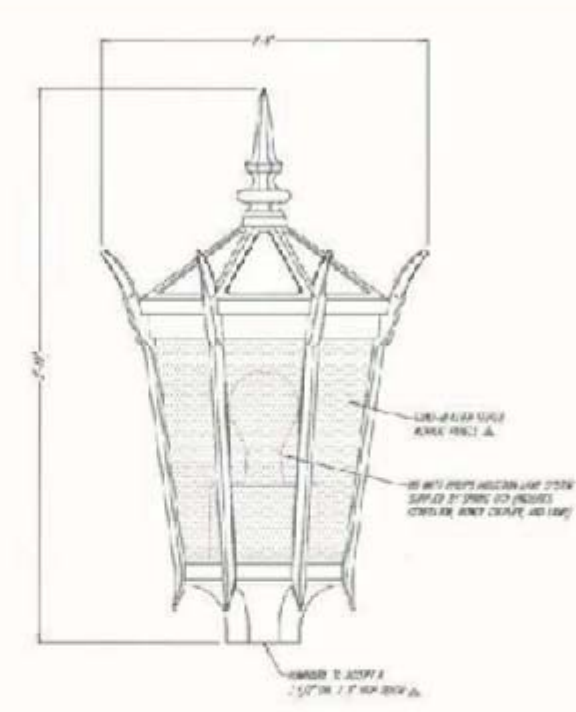
**Materials:**  
 Cast Aluminum Alloy #356  
 Frosted Seeded Acrylic  
 Stainless Steel Screws  
 Black Finish

**Company:**  
 Spring City  
 Phone: 1(610) 948-4000  
 Website: sales@springcity.com

**Current Pricing:** \$1,425 per head  
 Please verify with company



Induction Head



The drawing is property of Spring City Electrical Mfg. Co. and is loaned to the purchaser with the understanding that it is not to be reproduced, copied, or used in any way without the express written permission of Spring City Electrical Mfg. Co.

**FIXTURE TYPE "SB"**

**LUMINAIRE SPECIFICATIONS**

STYLE:	EDGEWATER
HEIGHT:	63 1/2"
WIDTH:	18 1/2" OCTAGONAL
MATERIAL:	CAST ALUMINUM ALLOY ANS1 356 PER A & T M 828-86
PANEL:	PLEASE SELECT A GLASS OR ACRYLIC PANEL BELOW
FINISH:	POWDER COAT - PLEASE SPECIFY WITH PAL NUMBER
LAMPING:	PLEASE SELECT WATTAGE BELOW
VOLTAGE:	ELECTRICALLY WIRE AT 120-277 VOLTS
COLOR TEMP:	PLEASE SELECT COLOR TEMPERATURE BELOW
OPTICAL SYSTEM:	PLEASE SELECT DISTRIBUTION BELOW
SOURCE:	TRV

CATALOG NO.: ALMEDG-L-EV-KF3-FED-CU

CAT. NO.	LED WATTAGE	CAT. NO.	COLOR MATERIAL
LE40	40 WATTS	YPLD	CLEAR ACRYLIC
LE60	60 WATTS	YPLF	LED GRADE FROSTED ACRYLIC
LE85	80 WATTS		
LE100	100 WATTS		

OTHER WATTAGE AVAILABLE UPON REQUEST

CAT. NO.	COLOR TEMP.	CAT. NO.	OPTICAL SYSTEM
22	2200K	CRM	TYPE III
27	2700K	CNS	TYPE IV
30	3000K	FMS	TYPE II (FROSTED)
40	4000K	FNM	TYPE IV (FROSTED)
45	4800K		

OTHER COLOR TEMPERATURES AVAILABLE UPON REQUEST

INTEGRATED LIGHTING CONTROL PROVISIONS ARE AVAILABLE UPON REQUEST

**Spring City Electrical Mfg. Co.**  
 HALL AND MAIN STREETS, P.O. BOX 16, SPRING CITY, PA 18081  
 PHONE: 610 948 4000 FAX: 610 948 0077 WWW.SPRINGCITY.COM

DESCRIPTION: THE EDGEWATER DARK SKY LED LUMINAIRE

### Street Lights A.3

**Specifications**  
 Herwig WJ-12 Cast Post

**Dimensions:**  
 Diameter: 11"  
 Height: 11' 11"

**Materials:**  
 Cast Aluminum, black finish  
 Tapered and fluted shaft  
 Cast single box GFI receptacle with weatherproof cover  
 4 - 5/8" x 18" anchor bolts

**Company:**  
 Herwig  
 Phone: 1(800) 643-9523  
 Website: www.herwig.com

**Current Pricing:**  
 Please verify with company

City of Northville Secondary Streets Design Standards 23

### D-Series Size 1 LED Area Luminaire

**Specifications**

**EPA:** 0.69 ft<sup>2</sup> (0.06 m<sup>2</sup>)  
 Length: 32.71" (831 mm)  
 Width: 14.24" (362 mm)  
 Height H1: 7.88" (200 mm)  
 Height H2: 2.73" (69 mm)  
 Weight: 34 lbs (15.4 kg)

**Ordering Information**

**EXAMPLE:** DSX1 LED P7 40K 70CRI T3M MVOLT SPA NLTAR2 PIRHN DDBXD

Series	LEDs	Color temperature	Color Rendering Index	Distribution	Voltage	Mounting
DSX1 LED	Forward optics (This section 70CRI only)	30K 3000K	70CRI	AFR Automotive front row	MVOLT (120V-277V) <sup>1)</sup>	Shipped included
P1	P6	40K 4000K	70CRI	T15 Type I short	MVOLT (120V-480V) <sup>1)</sup>	SPA Square pole mounting (85 drilling)
P2	P7	50K 5000K	70CRI	T2M Type II medium	MVOLT (277V-480V) <sup>1)</sup>	SPA Square pole mounting (85 drilling)
P3	P8	50K 5000K	70CRI	T3M Type III medium "SA"		SPA Square pole mounting (85 drilling)
P4	P9	50K 5000K	70CRI	T3LX Type III low glare		SPA Square pole mounting (85 drilling)
P5		50K 5000K	70CRI	T4LX Type IV low glare		SPA Square pole mounting (85 drilling)
P10	P12	50K 5000K	70CRI	TFM Forward throw medium		SPA Square pole mounting (85 drilling)
P11	P13	50K 5000K	70CRI	TFM Forward throw medium		SPA Square pole mounting (85 drilling)

**Control options**

Shipped installed	Other options	Finish options
NEAR2 PIRHN 8-light AIR gen 2 enabled with hi-level motion / ambient sensor, 8-47 mounting height, ambient sensor enabled at 26" (6.6 m)	PER7 Seven-pin receptacle only (lanterns ordered separately) <sup>1)</sup>	DRBK Dark Bronze
PIR High flow, motion/ambient sensor, 8-47 mounting height, ambient sensor enabled at 26" (6.6 m)	FAO Field adjustable output <sup>1)</sup>	DRBL Black
PER 85MAA built-in lock receptacle only (lanterns ordered separately) <sup>1)</sup>	BL30 Bi-level switched dimming, 50% <sup>1)</sup>	DRAL Natural Aluminum
PER8 Five-pin receptacle only (lanterns ordered separately) <sup>1)</sup>	BL50 Bi-level switched dimming, 50% <sup>1)</sup>	DRWH White
	DWG 0-10v dimming wires pulled outside base for use with an external control, ordered separately <sup>1)</sup>	DRBK Textured dark bronze
	DS Dual switching <sup>1)</sup>	DRSL Textured silver
		DRBK Textured black
		DRAL Textured natural aluminum
		DRWH Textured white

