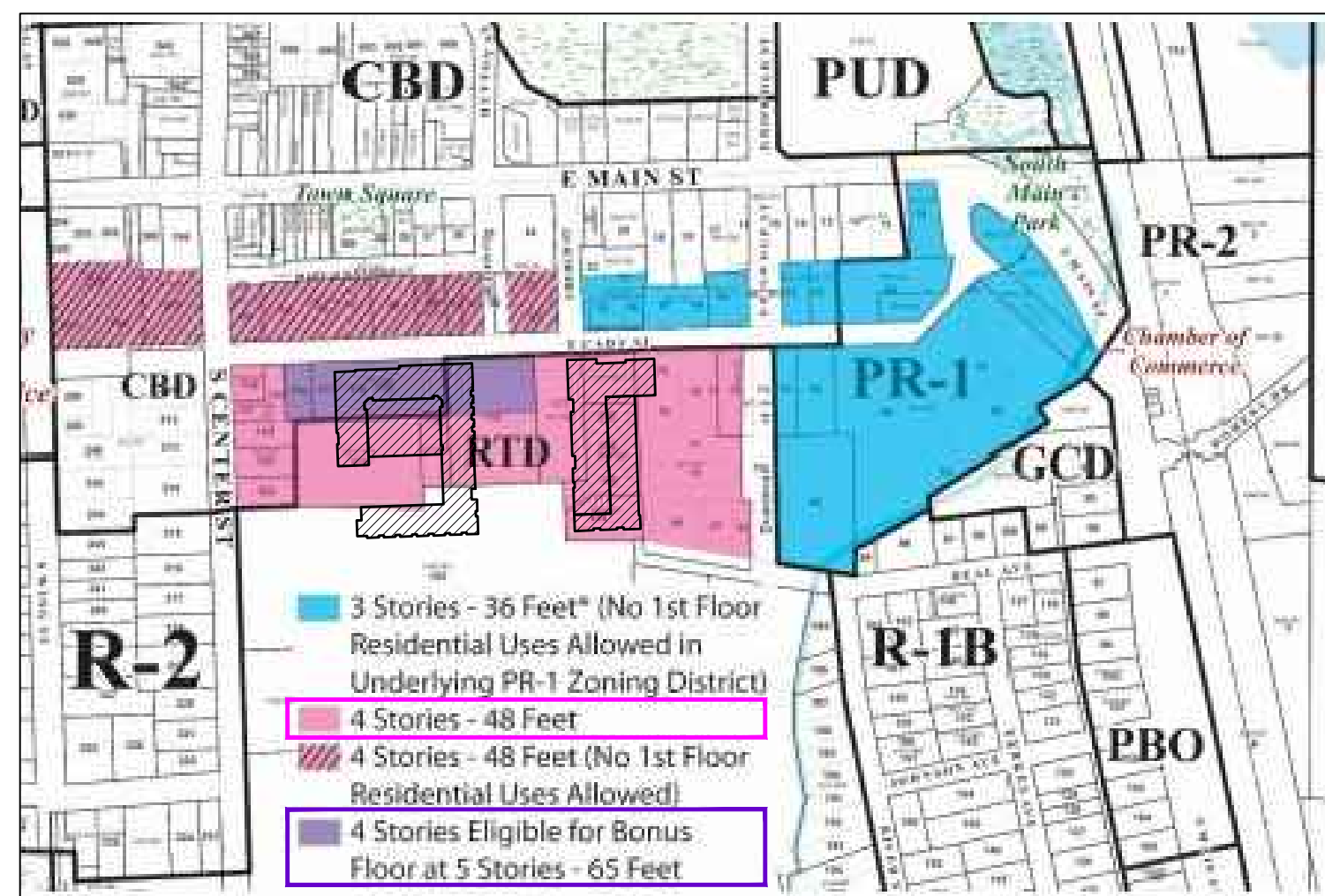


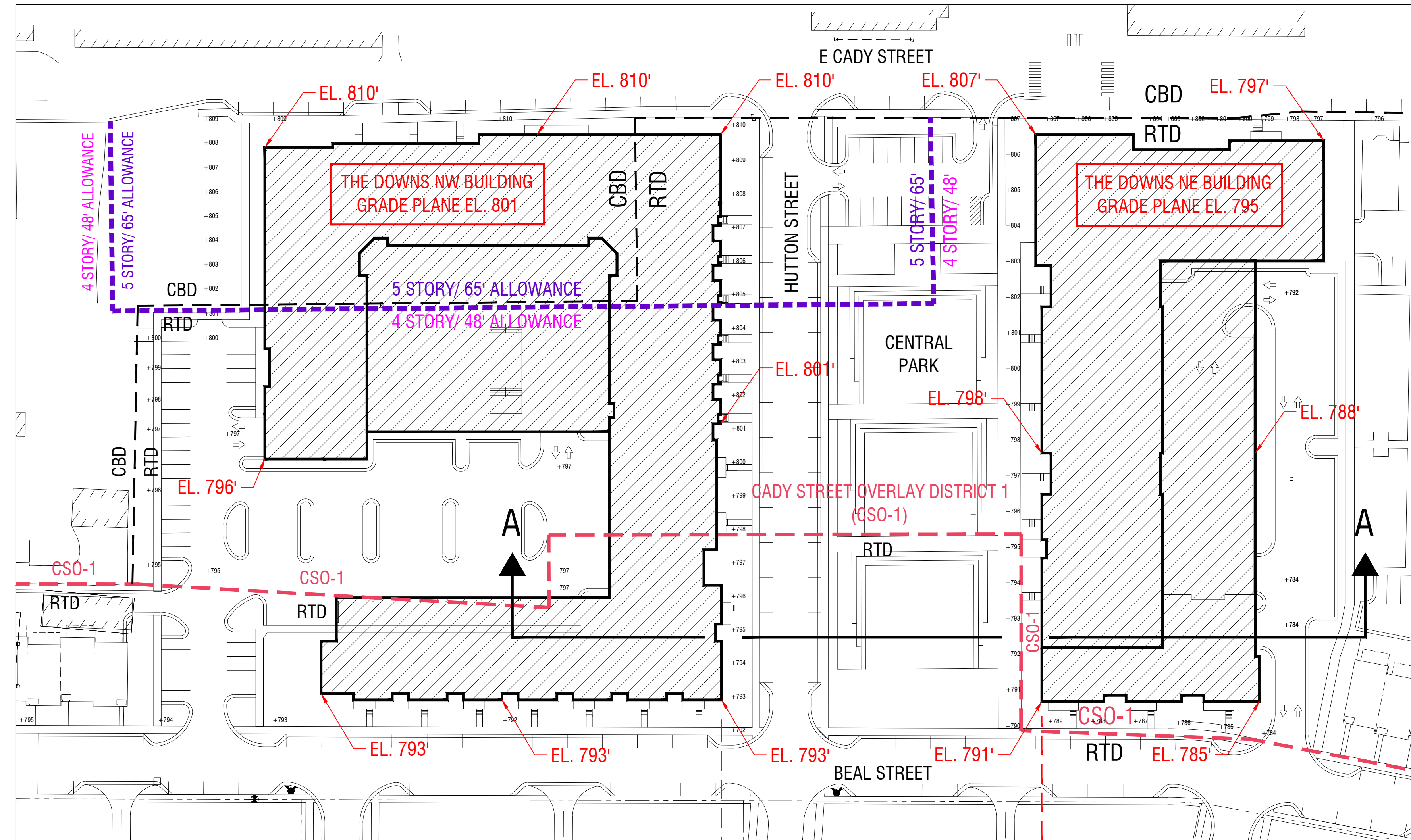
1 CADY STREET OVERLAY DISTRICT BOUNDARY - NORTHVILLE ZONING ARTICLE 10 FIGURE 5

SCALE: NTS



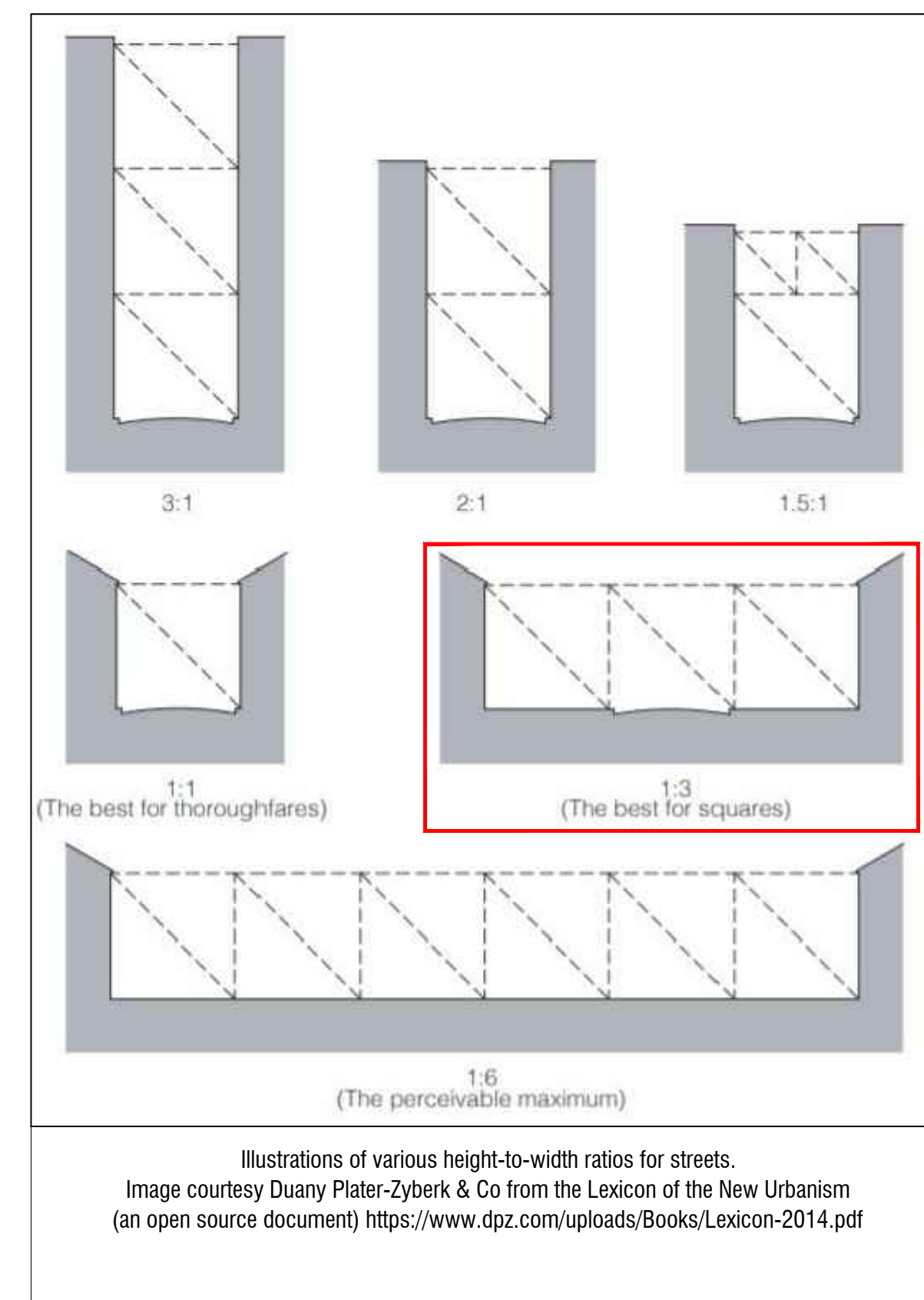
2 BUILDING HEIGHT ALLOWANCE - NORTHVILLE ZONING ARTICLE 10 FIGURE 7

SCALE: NTS



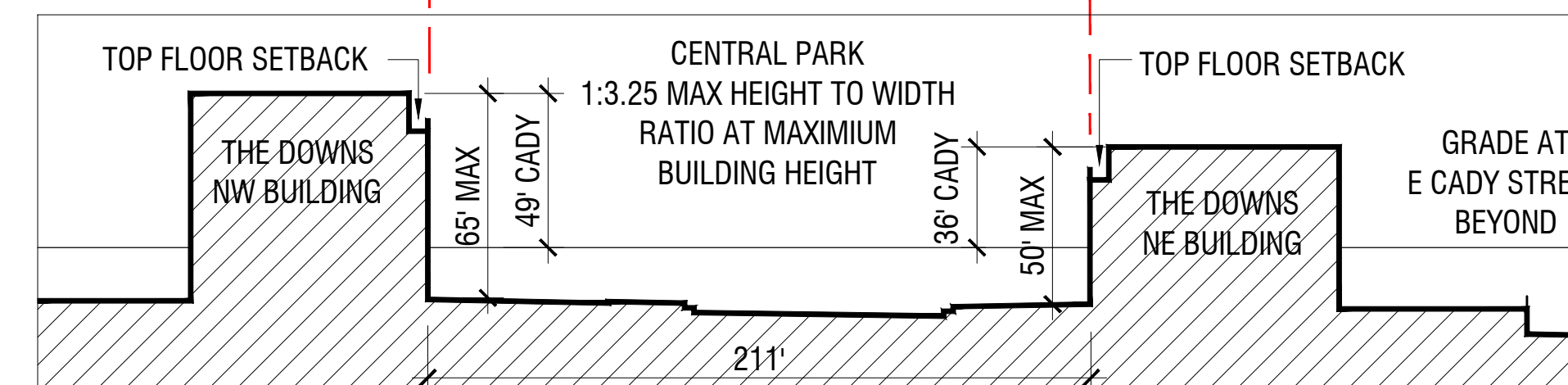
3 ZONING OVERLAY AND GRADE PLANE CALCULATION - PLAN DIAGRAM

SCALE: 1" = 50'-0" 0 25 50 100



5 IDEAL CITY SQUARE HEIGHT TO WIDTH RATIO - DIAGRAM

SCALE: NTS



4 SECTION AA - CENTRAL PARK HEIGHT TO WIDTH RATIO

SCALE: 1" = 50'-0" 0 25 50 100



6 CENTRAL PARK HEIGHT TO WIDTH RATIO - PERSPECTIVE VIEW

SCALE: NTS

THE DOWNS

Northville, Michigan

HUNTER PASTEUR, NORTHVILLE LLC

OWNER

32300 Northwestern Hwy

Suite 230

Farmington Hills, MI 48334

NEUMANN SMITH ARCHITECTURE

ARCHITECT OF RECORD

400 Galleria Office Centre Suite 555

Southfield, MI 48034

248.352.8310

SEIBER KEAST ENGINEERING

CIVIL ENGINEER

100 Main Centre Suite 10

Northville, MI 48167

248.308.3331

GRISSIM METZ ANDRIESE

LANDSCAPE ARCHITECT

15000 Edward N Hines Drive, Suite A

Plymouth, MI 48170

248.347.7010

PROJECT NUMBER: 20090

DATE: 12/14/2021

REVISIONS:

12/14/2021 Preliminary Site

Plan Approval

1/18/2022 Review Comments

SCALE: AS NOTED

DRAWING NAME:

NORTHVILLE

BUILDING HEIGHTS

DIAGRAM

DRAWING NUMBER:

THE DOWNS

Northville, Michigan

HUNTER PASTEUR, NORTHVILLE LLC
OWNER

32300 Northwestern Hwy
Suite 230
Farmington Hills, MI 48334

NEUMANN SMITH ARCHITECTURE
ARCHITECT OF RECORD
400 Galleria Office Centre Suite 555
Southfield, MI 48034
248.352.8310

SEIBER KEAST ENGINEERING
CIVIL ENGINEER
100 MainCentre Suite 10
Northville, MI 48167
248.308.3331

GRISSIM METZ ANDRIESE
LANDSCAPE ARCHITECT
15000 Edward N Hines Drive, Suite A
Plymouth, MI 48170
248.347.7010

PROJECT NUMBER: 20090

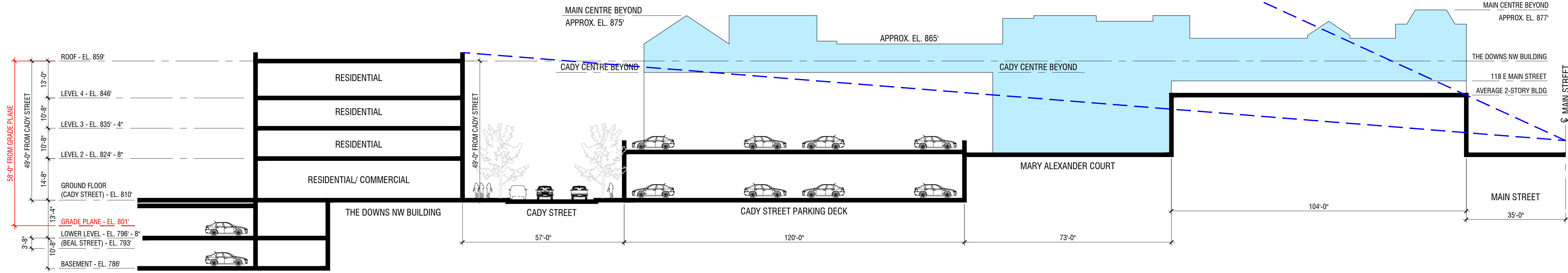
DATE: 12/14/2021

REVISIONS:
12/14/2021 Preliminary Site
Plan Approval
1/18/2022 Review Comments

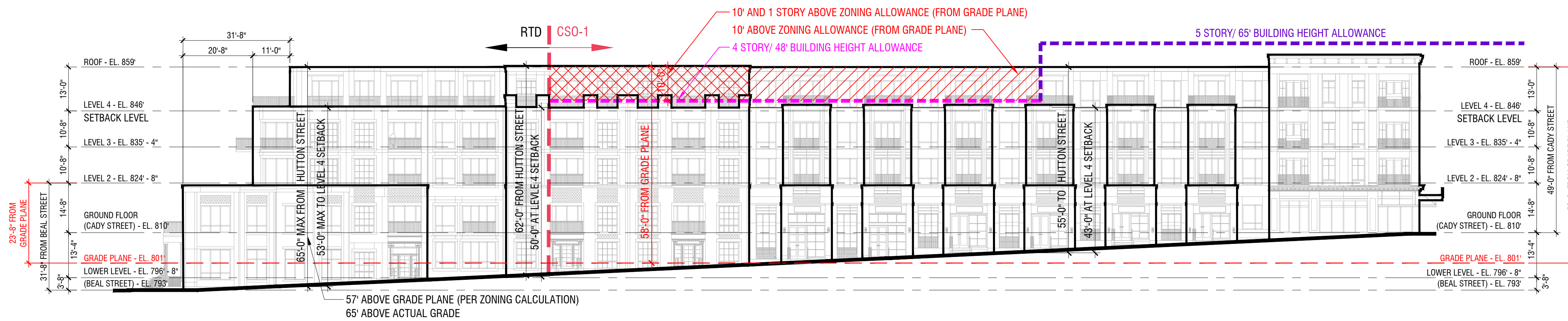
SCALE: AS NOTED

DRAWING NAME:
NORTHVILLE
BUILDING HEIGHTS
DIAGRAM

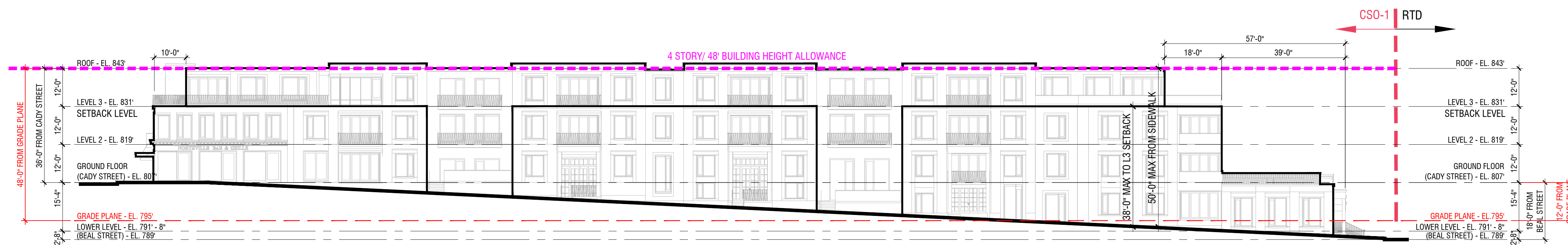
DRAWING NUMBER:



1 SECTION THROUGH NW BUILDING/ CADY STREET/ MAIN STREET
SCALE: 1" = 20'-0"



2 NW BUILDING EAST ELEVATION (FACING HUTTON STREET)
SCALE: 1" = 20'-0"



3 NE BUILDING EAST ELEVATION (FACING HUTTON STREET)
SCALE: 1" = 20'-0"

THE DOWNS

Northville, Michigan

HUNTER PASTEUR, NORTHVILLE LLC
OWNER

32300 Northwestern Hwy
Suite 230
Farmington Hills, MI 48334

NEUMANN SMITH ARCHITECTURE
ARCHITECT OF RECORD

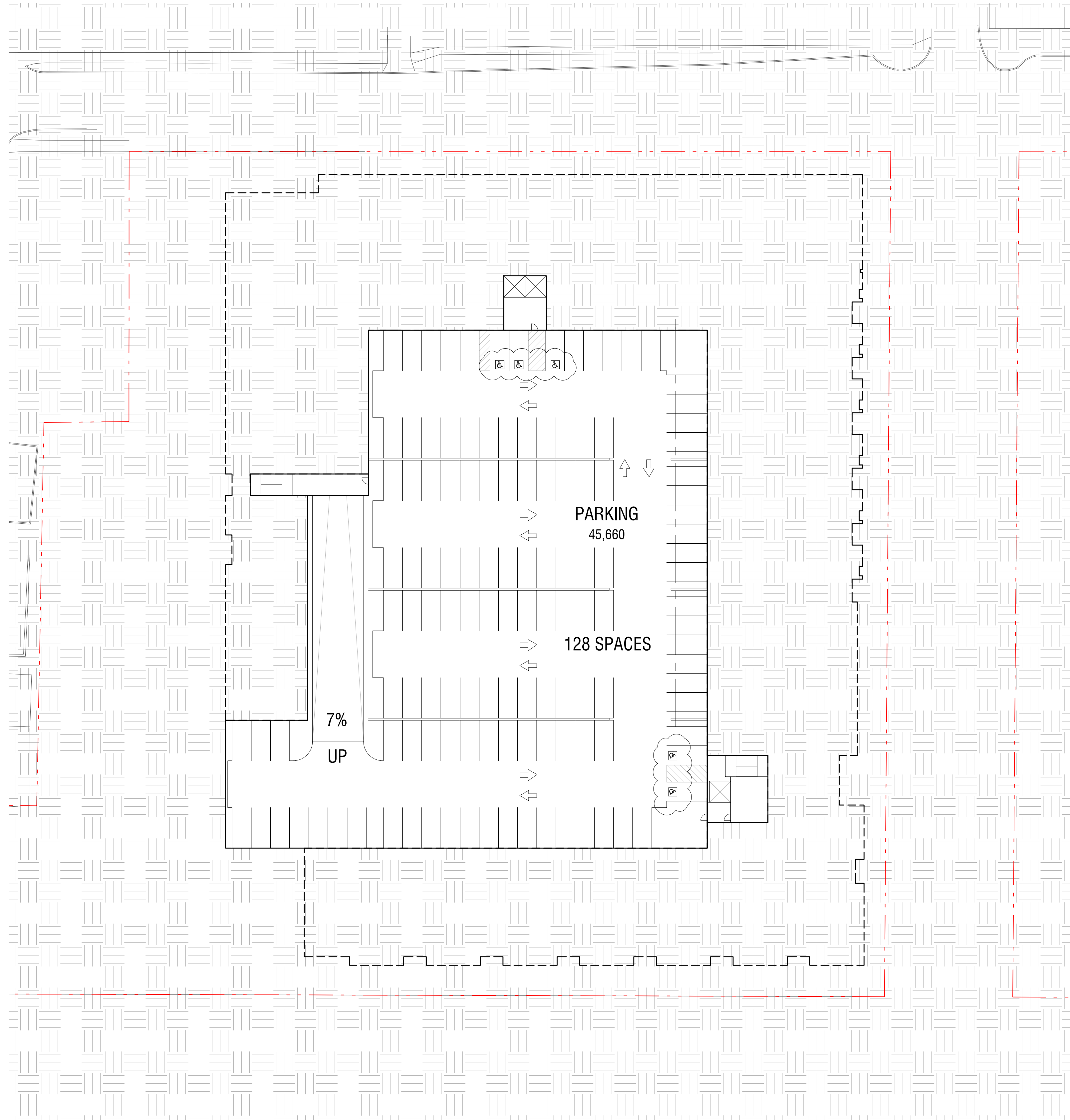
400 Galleria Officecentre Suite 555
Southfield, MI 48034
248.352.8310

SEIBER KEAST ENGINEERING
CIVIL ENGINEER

100 MainCentre Suite 10
Northville, MI 48167
248.308.3331

GRISSIM METZ ANDRIESE
LANDSCAPE ARCHITECT

15000 Edward N Hines Drive, Suite A
Plymouth, MI 48170
248.347.7010



1 NORTHWEST SITE - BASEMENT LEVEL
SCALE: 1" = 30'-0"



PROJECT NUMBER: 20090

DATE: 12/14/2021

REVISIONS:

12/14/2021 Preliminary Site

Plan Approval

1/18/2022 Review Comments

SCALE: 1" = 30'-0"

DRAWING NAME:

**NORTHWEST SITE
BASEMENT LEVEL
FLOOR PLAN**

DRAWING NUMBER:

A1.1NW

THE DOWNS

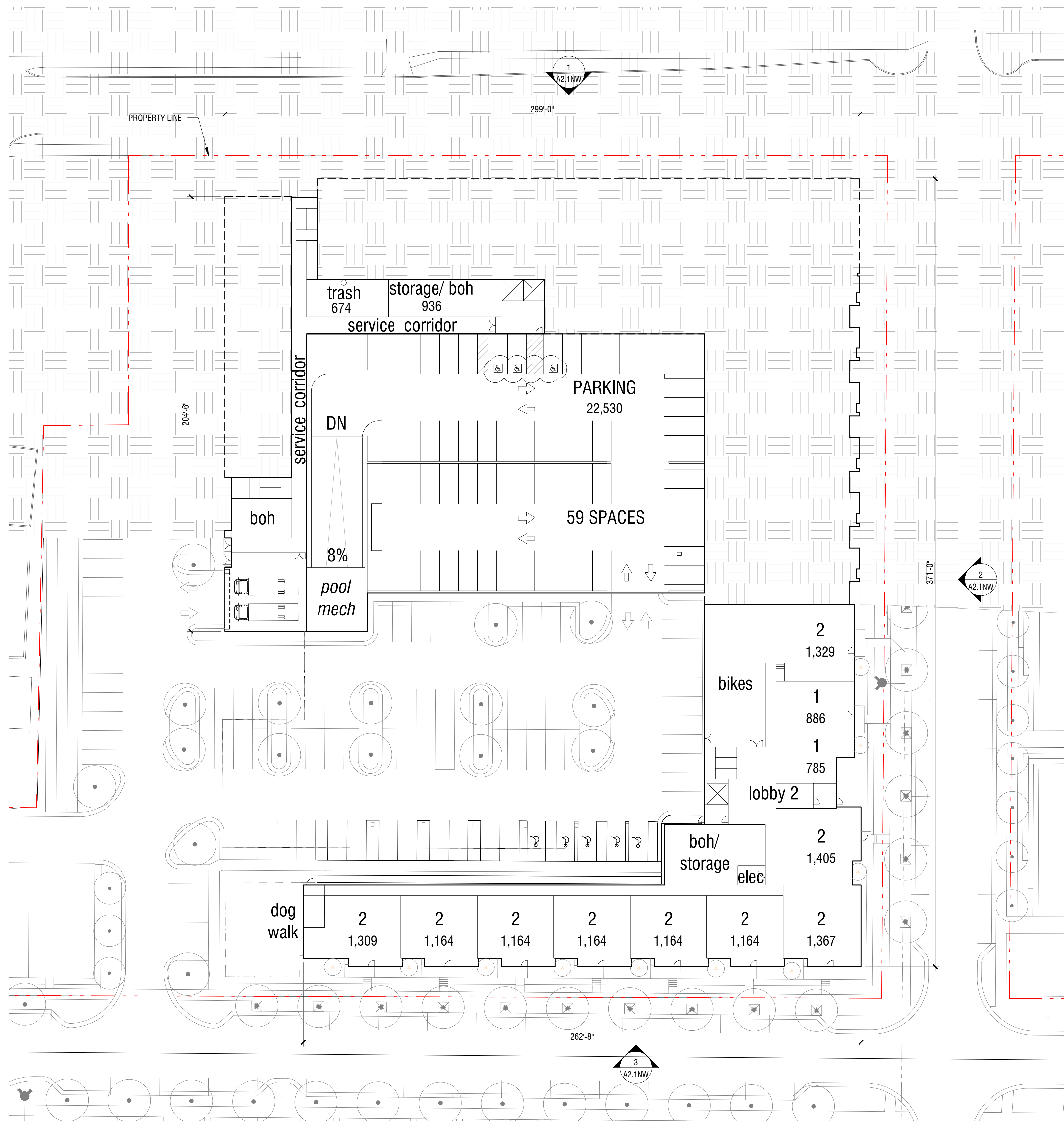
Northville, Michigan

HUNTER PASTEUR, NORTHVILLE LLC
OWNER
32300 Northwestern Hwy
Suite 230
Farmington Hills, MI 48334

NEUMANN SMITH ARCHITECTURE
ARCHITECT OF RECORD
400 Galleria Officecentre Suite 555
Southfield, MI 48034
248.352.8310

SEIBER KEAST ENGINEERING
CIVIL ENGINEER
100 MainCentre Suite 10
Northville, MI 48167
248.308.3331

GRISSIM METZ ANDRIESE
LANDSCAPE ARCHITECT
15000 Edward N Hines Drive, Suite A
Plymouth, MI 48170
248.347.7010



1 NORTHWEST SITE - LOWER LEVEL
SCALE: 1" = 30'-0"

PROJECT NUMBER: 20090

DATE: 12/14/2021

REVISIONS:
12/14/2021 Preliminary Site
Plan Approval
1/18/2022 Review Comments

SCALE: 1" = 30'-0"

DRAWING NAME:
**NORTHWEST SITE
LOWER LEVEL
FLOOR PLAN**

DRAWING NUMBER:

A1.2NW

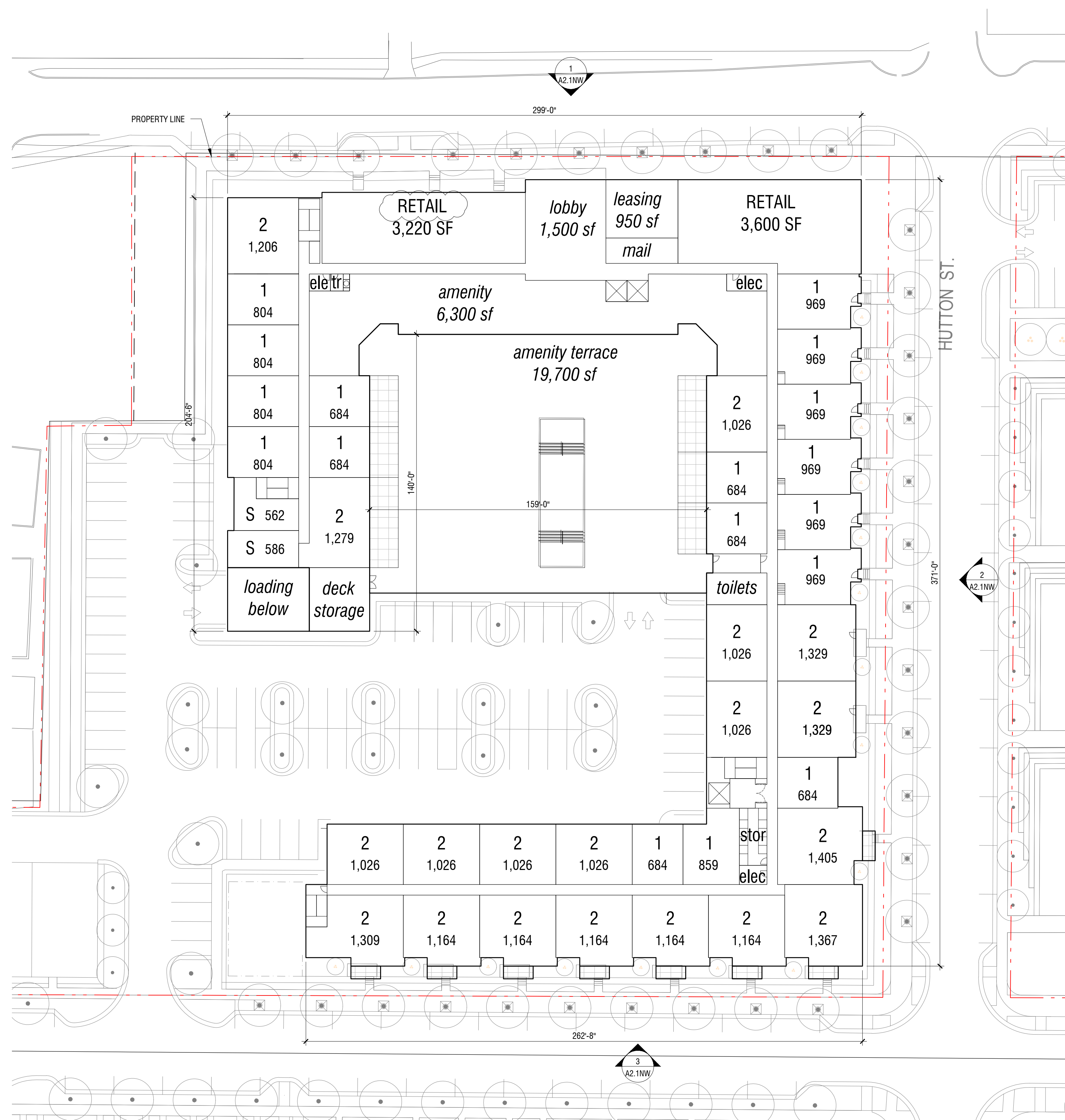
THE DOWNS
Northville, Michigan

HUNTER PASTEUR, NORTHVILLE LLC
OWNER
32300 Northwestern Hwy
Suite 230
Farmington Hills, MI 48334

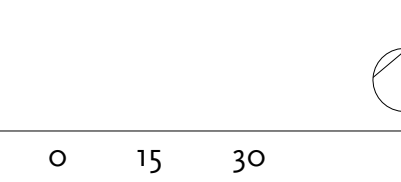
NEUMANN SMITH ARCHITECTURE
ARCHITECT OF RECORD
400 Galleria Officecentre Suite 555
Southfield, MI 48034
248.352.8310

SEIBER KEAST ENGINEERING
CIVIL ENGINEER
100 MainCentre Suite 10
Northville, MI 48167
248.308.3331

GRISSIM METZ ANDRIESE
LANDSCAPE ARCHITECT
15000 Edward N Hines Drive, Suite A
Plymouth, MI 48170
248.347.7010



1 NORTHWEST SITE - GROUND LEVEL
SCALE: 1" = 30'-0"



PROJECT NUMBER: 20090

DATE: 12/14/2021

REVISIONS:
12/14/2021 Preliminary Site
Plan Approval
1/18/2022 Review Comments

SCALE: 1" = 30'-0"

DRAWING NAME:
**NORTHWEST SITE
GROUND LEVEL
FLOOR PLAN**

DRAWING NUMBER:

A1.3NW

THE DOWNS
Northville, Michigan

HUNTER PASTEUR, NORTHVILLE LLC
OWNER
32300 Northwestern Hwy
Suite 230
Farmington Hills, MI 48334

NEUMANN SMITH ARCHITECTURE
ARCHITECT OF RECORD
400 Galleria Offcentre Suite 555
Southfield, MI 48034
248.352.8310

SEIBER KEAST ENGINEERING
CIVIL ENGINEER
100 MainCentre Suite 10
Northville, MI 48167
248.308.3331

GRISSIM METZ ANDRIESE
LANDSCAPE ARCHITECT
15000 Edward N Hines Drive, Suite A
Plymouth, MI 48170
248.347.7010

PROJECT NUMBER: 20090

DATE: 12/14/2021

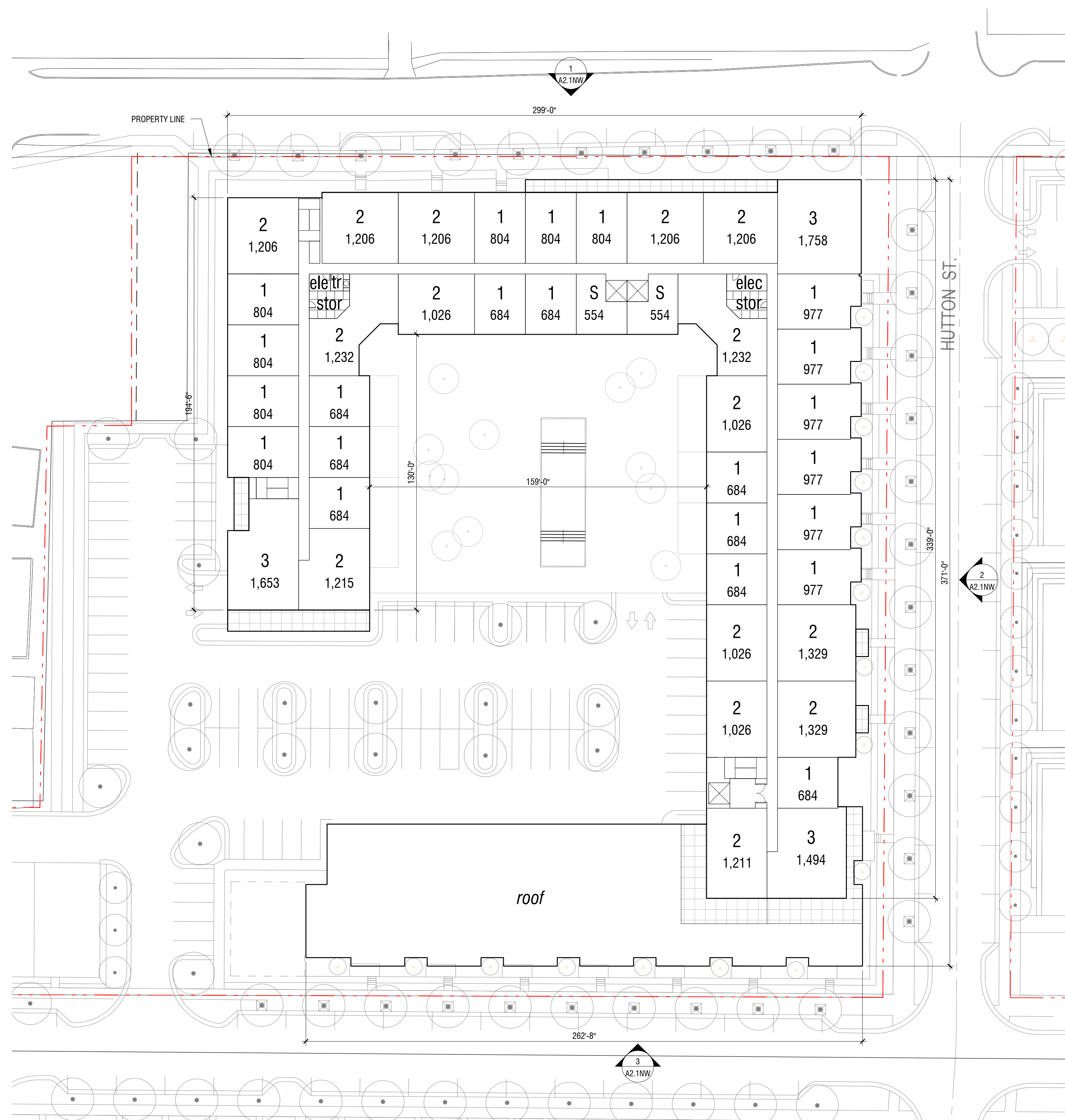
REVISIONS:
12/14/2021 Preliminary Site
Plan Approval
1/18/2022 Review Comments

SCALE: 1" = 30'-0"

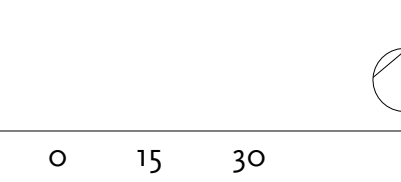
DRAWING NAME:
**NORTHWEST SITE
LEVEL 2
FLOOR PLAN**

DRAWING NUMBER:

A1.4NW



1 NORTHWEST SITE - LEVEL 2
SCALE: 1" = 30'-0"



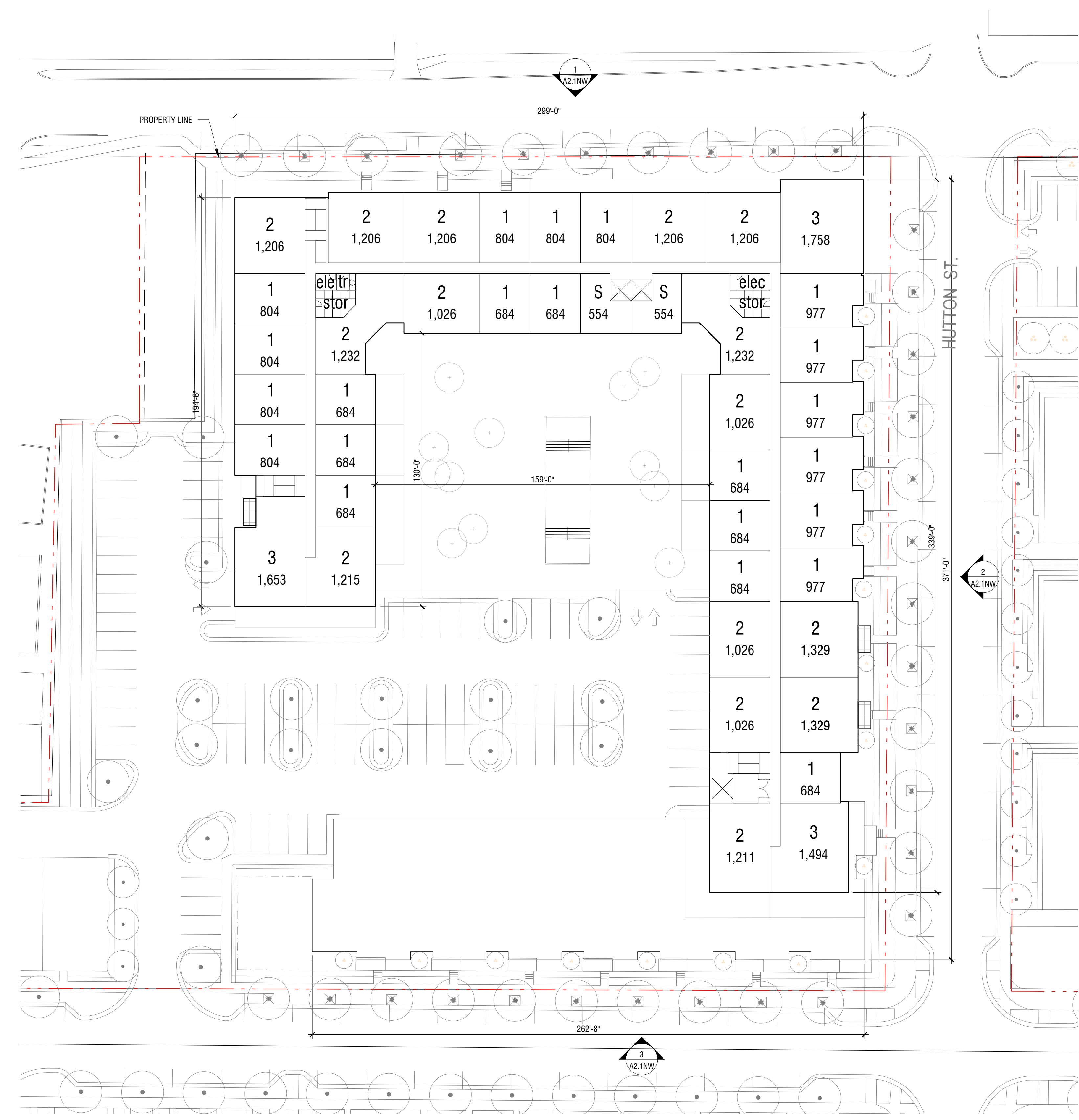
THE DOWNS
Northville, Michigan

HUNTER PASTEUR, NORTHVILLE LLC
OWNER
32300 Northwestern Hwy
Suite 230
Farmington Hills, MI 48334

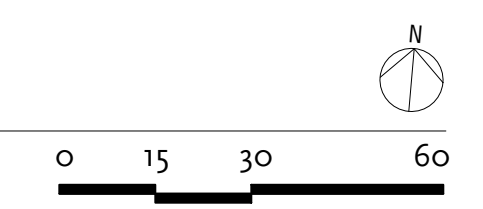
NEUMANN SMITH ARCHITECTURE
ARCHITECT OF RECORD
400 Galleria Officecentre Suite 555
Southfield, MI 48034
248.352.8310

SEIBER KEAST ENGINEERING
CIVIL ENGINEER
100 MainCentre Suite 10
Northville, MI 48167
248.308.3331

GRISSIM METZ ANDRIESE
LANDSCAPE ARCHITECT
15000 Edward N Hines Drive, Suite A
Plymouth, MI 48170
248.347.7010



1 NORTHWEST SITE - LEVEL 3
SCALE: 1" = 30'-0"



PROJECT NUMBER: 20090

DATE: 12/14/2021

REVISIONS:
12/14/2021 Preliminary Site
Plan Approval
1/18/2022 Review Comments

SCALE: 1" = 30'-0"

DRAWING NAME:
**NORTHWEST SITE
LEVEL 3
FLOOR PLAN**

DRAWING NUMBER:

A1.5NW

THE DOWNS
Northville, Michigan

HUNTER PASTEUR, NORTHVILLE LLC
OWNER
32300 Northwestern Hwy
Suite 230
Farmington Hills, MI 48334

NEUMANN SMITH ARCHITECTURE
ARCHITECT OF RECORD
400 Galleria Officecentre Suite 555
Southfield, MI 48034
248.352.8310

SEIBER KEAST ENGINEERING
CIVIL ENGINEER
100 MainCentre Suite 10
Northville, MI 48167
248.308.3331

GRISSIM METZ ANDRIESE
LANDSCAPE ARCHITECT
15000 Edward N Hines Drive, Suite A
Plymouth, MI 48170
248.347.7010

PROJECT NUMBER: 20090

DATE: 12/14/2021

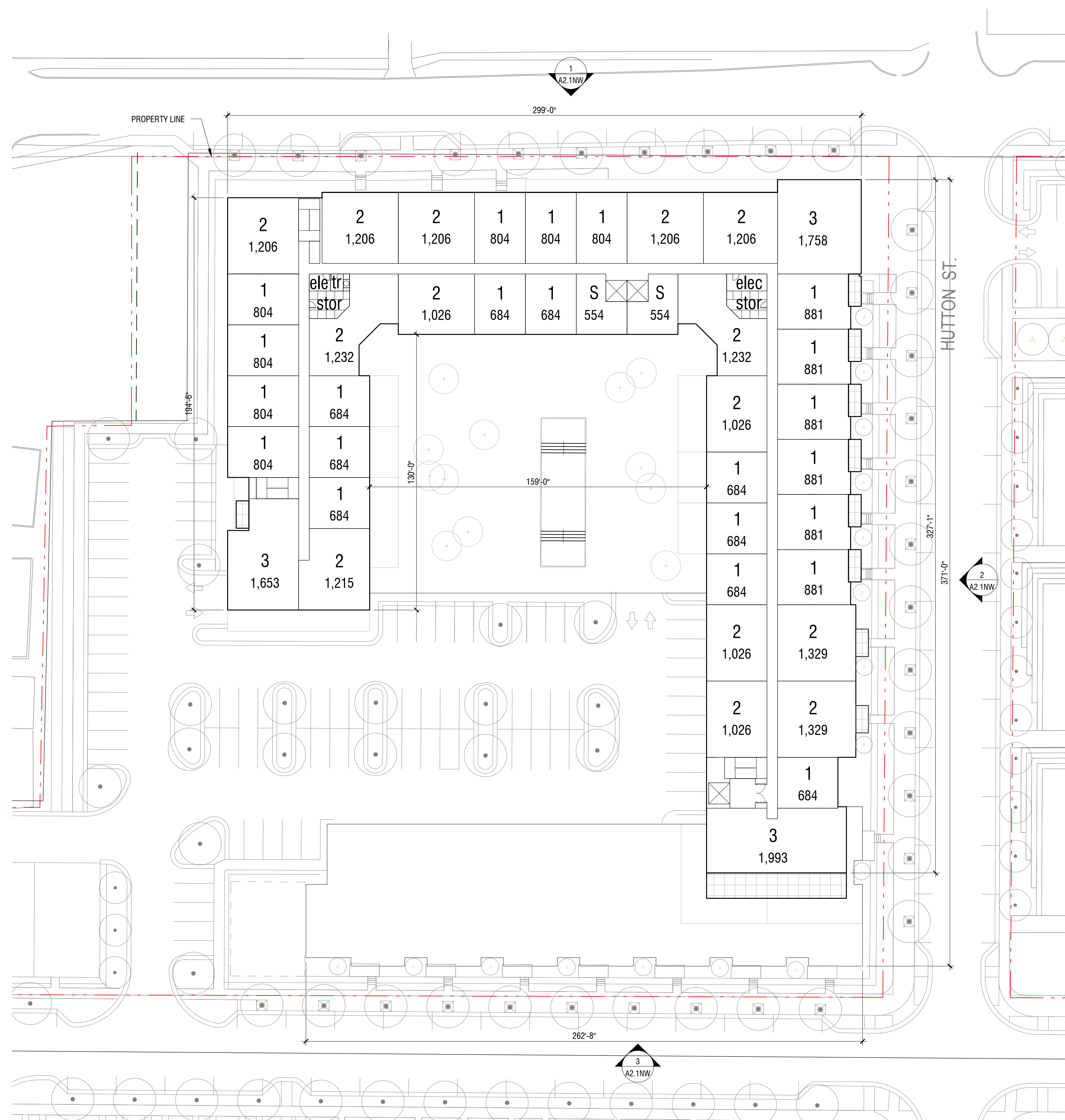
REVISIONS:
12/14/2021 Preliminary Site
Plan Approval
1/18/2022 Review Comments

SCALE: 1" = 30'-0"

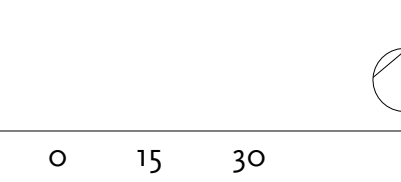
DRAWING NAME:
**NORTHWEST SITE
LEVEL 4
FLOOR PLAN**

DRAWING NUMBER:

A1.6NW



1 NORTHWEST SITE - LEVEL 4
SCALE: 1" = 30'-0"



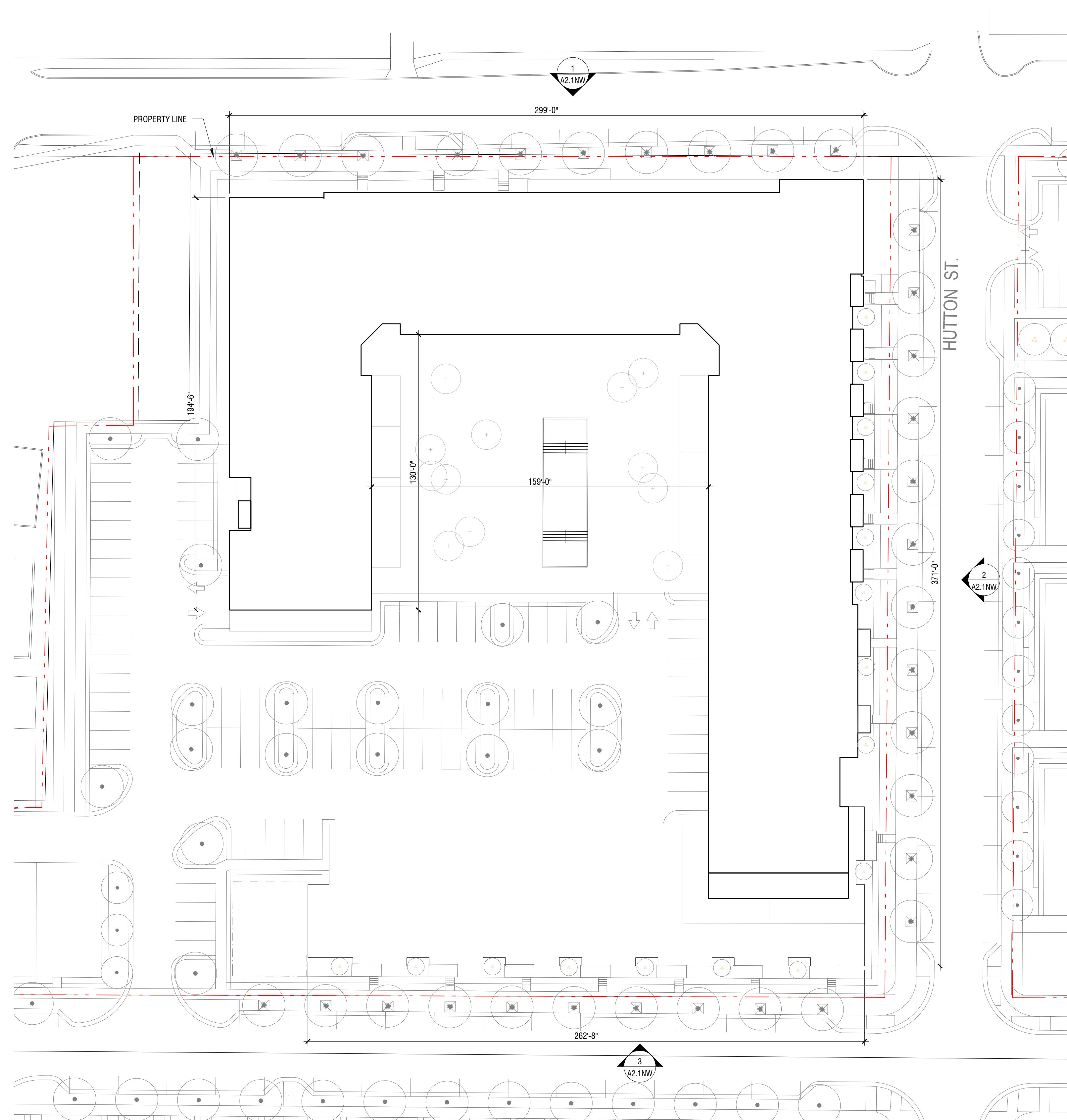
THE DOWNS
Northville, Michigan

HUNTER PASTEUR, NORTHVILLE LLC
OWNER
32300 Northwestern Hwy
Suite 230
Farmington Hills, MI 48334

NEUMANN SMITH ARCHITECTURE
ARCHITECT OF RECORD
400 Galleria Office Centre Suite 555
Southfield, MI 48034
248.352.8310

SEIBER KEAST ENGINEERING
CIVIL ENGINEER
100 Main Centre Suite 10
Northville, MI 48167
248.308.3331

GRISSIM METZ ANDRIESE
LANDSCAPE ARCHITECT
15000 Edward N Hines Drive, Suite A
Plymouth, MI 48170
248.347.7010



1 NORTHWEST SITE - ROOF LEVEL
SCALE: 1" = 30'-0"

PROJECT NUMBER: 20090

DATE: 12/14/2021

REVISIONS:
12/14/2021 Preliminary Site
Plan Approval
1/18/2022 Review Comments

SCALE: 1" = 30'-0"

DRAWING NAME:
**NORTHWEST SITE
ROOF LEVEL
FLOOR PLAN**

DRAWING NUMBER:

A1.7NW

THE DOWNS
Northville, Michigan

HUNTER PASTEUR, NORTHVILLE LLC
OWNER
32300 Northwestern Hwy
Suite 230
Farmington Hills, MI 48334

NEUMANN SMITH ARCHITECTURE
ARCHITECT OF RECORD
400 Galleria Officecentre Suite 555
Southfield, MI 48034
248.352.8310

SEIBER KEAST ENGINEERING
CIVIL ENGINEER
100 MainCentre Suite 10
Northville, MI 48167
248.308.3331

GRISSIM METZ ANDRIESE
LANDSCAPE ARCHITECT
15000 Edward N Hines Drive, Suite A
Plymouth, MI 48170
248.347.7010

PROJECT NUMBER: 20090

DATE: 12/14/2021

REVISIONS:	
12/14/2021	Preliminary Site
	Plan Approval
1/18/2022	Review Comments

SCALE: 1/16" = 1'-0"

DRAWING NAME:
**NORTHWEST SITE
PUBLIC WAY
ELEVATIONS**

DRAWING NUMBER:

A2.1NW



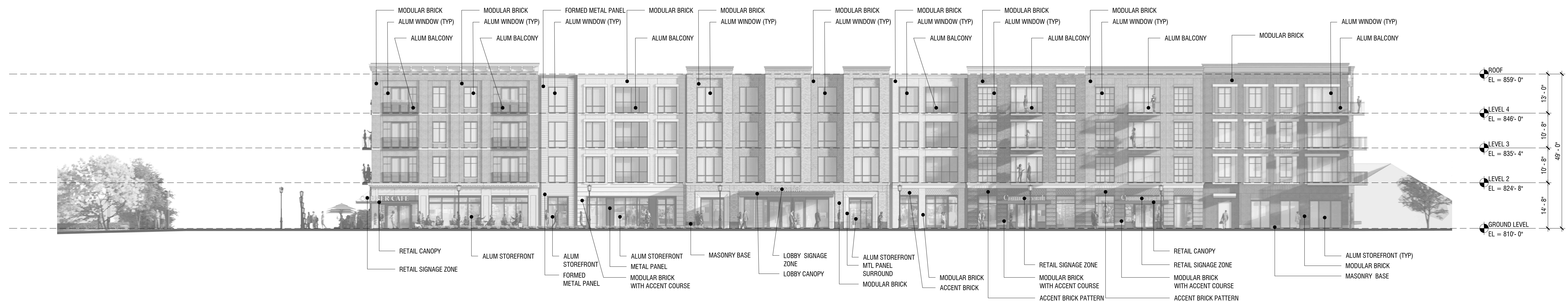
3 NORTHWEST SITE - SOUTH (BEAL STREET) ELEVATION

SCALE: 1/16" = 1'-0"



2 NORTHWEST SITE - EAST (HUTTON STREET) ELEVATION

SCALE: 1/16" = 1'-0"



1 NORTHWEST SITE - NORTH (CADY STREET) ELEVATION

SCALE: 1/16" = 1'-0"

THE DOWNS

Northville, Michigan

HUNTER PASTEUR, NORTHVILLE LLC
OWNER

32300 Northwestern Hwy
Suite 230
Farmington Hills, MI 48334

NEUMANN SMITH ARCHITECTURE
ARCHITECT OF RECORD

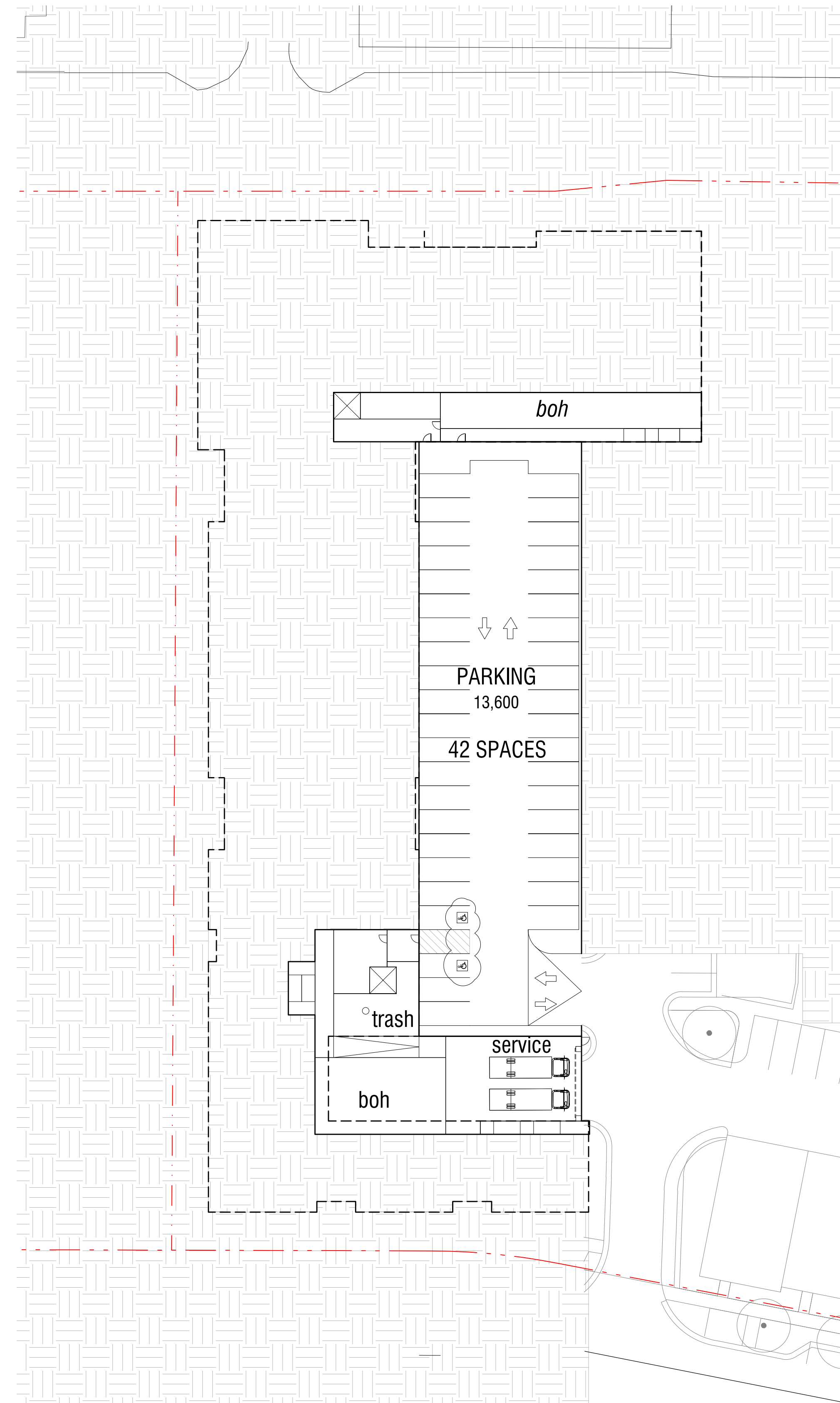
400 Galleria Officecentre Suite 555
Southfield, MI 48034
248.352.8310

SEIBER KEAST ENGINEERING
CIVIL ENGINEER

100 MainCentre Suite 10
Northville, MI 48167
248.308.3331

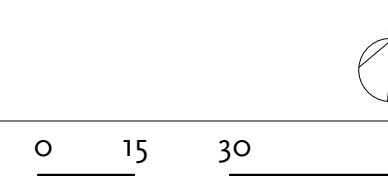
GRISSIM METZ ANDRIESE
LANDSCAPE ARCHITECT

15000 Edward N Hines Drive, Suite A
Plymouth, MI 48170
248.347.7010



1 NORTHEAST SITE - BASEMENT LEVEL

SCALE: 1" = 30'-0"



PROJECT NUMBER: 20090

DATE: 12/14/2021

REVISIONS:

12/14/2021 Preliminary Site

Plan Approval

1/18/2022 Review Comments

SCALE: 1" = 30'-0"

DRAWING NAME:

NORTHEAST SITE
BASEMENT LEVEL
FLOOR PLAN

DRAWING NUMBER:

A1.1NE

THE DOWNS

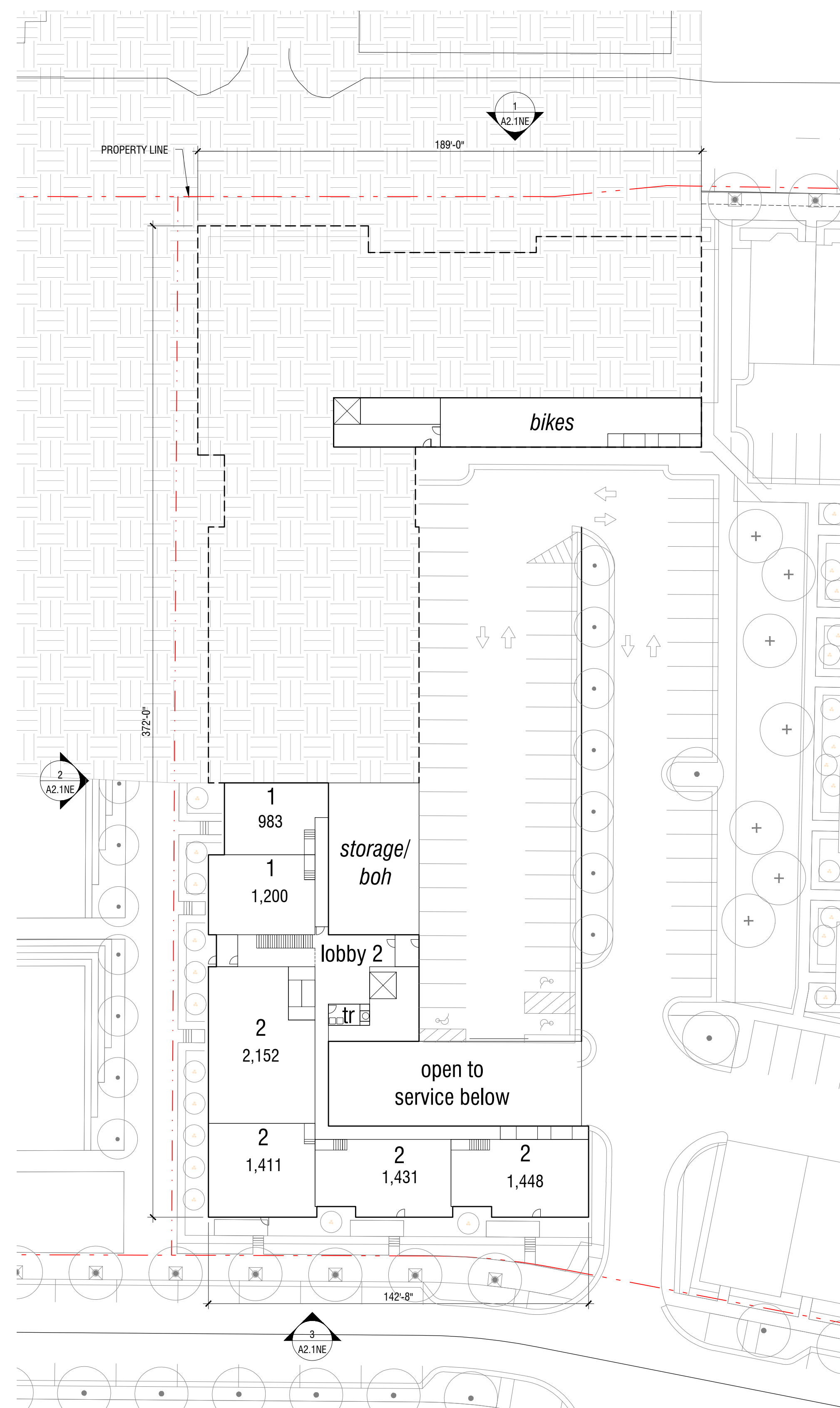
Northville, Michigan

HUNTER PASTEUR, NORTHVILLE LLC
OWNER
32300 Northwestern Hwy
Suite 230
Farmington Hills, MI 48334

NEUMANN SMITH ARCHITECTURE
ARCHITECT OF RECORD
400 Galleria Officentre Suite 555
Southfield, MI 48034
248.352.8310

SEIBER KEAST ENGINEERING
CIVIL ENGINEER
100 MainCentre Suite 10
Northville, MI 48167
248.308.3331

GRISSIM METZ ANDRIESE
LANDSCAPE ARCHITECT
15000 Edward N Hines Drive, Suite A
Plymouth, MI 48170
248.347.7010



1 NORTHEAST SITE - LOWER LEVEL

SCALE: 1" = 30' - 0"



PROJECT NUMBER: 20090

DATE: 12/14/2021

REVISIONS:
12/14/2021 Preliminary Site
Plan Approval
1/18/2022 Review Comments

SCALE: 1" = 30'-0"

DRAWING NAME:
**NORTHEAST SITE
LOWER LEVEL
FLOOR PLAN**

DRAWING NUMBER:

A1.2NE

THE DOWNS
Northville, Michigan

HUNTER PASTEUR, NORTHVILLE LLC
OWNER
32300 Northwestern Hwy
Suite 230
Farmington Hills, MI 48334

NEUMANN SMITH ARCHITECTURE
ARCHITECT OF RECORD
400 Galleria Officecentre Suite 555
Southfield, MI 48034
248.352.8310

SEIBER KEAST ENGINEERING
CIVIL ENGINEER
100 MainCentre Suite 10
Northville, MI 48167
248.308.3331

GRISSIM METZ ANDRIESE
LANDSCAPE ARCHITECT
15000 Edward N Hines Drive, Suite A
Plymouth, MI 48170
248.347.7010

PROJECT NUMBER: 20090

DATE: 12/14/2021

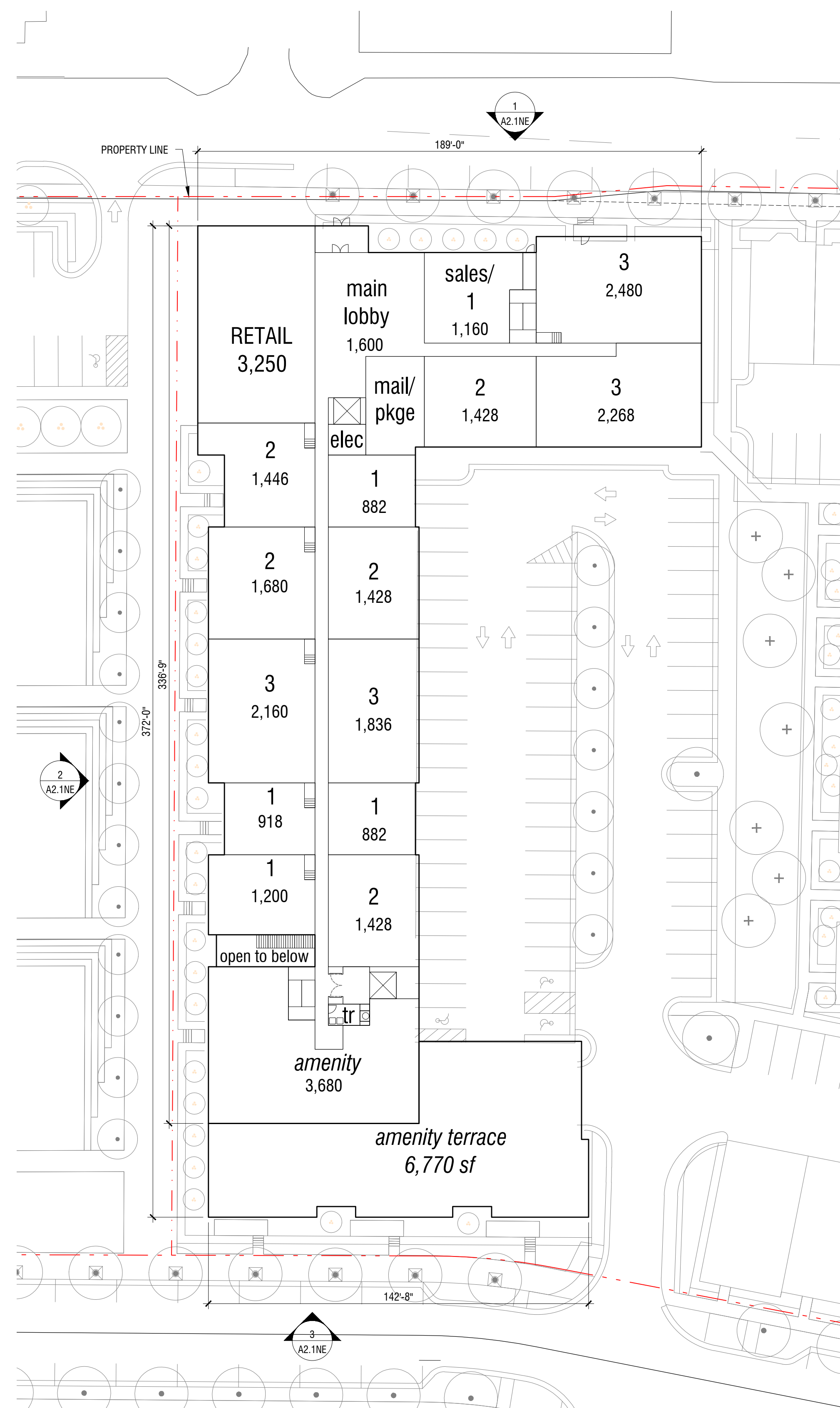
REVISIONS:
12/14/2021 Preliminary Site
Plan Approval
1/18/2022 Review Comments

SCALE: 1" = 30'-0"

DRAWING NAME:
**NORTHEAST SITE
GROUND LEVEL
FLOOR PLAN**

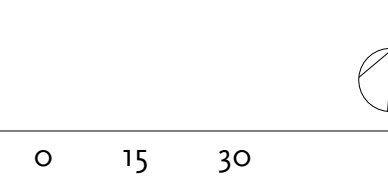
DRAWING NUMBER:

A1.3NE



1 NORTHEAST SITE - GROUND LEVEL

SCALE: 1" = 30'-0"



THE DOWNS
Northville, Michigan

HUNTER PASTEUR, NORTHVILLE LLC
OWNER
32300 Northwestern Hwy
Suite 230
Farmington Hills, MI 48334

NEUMANN SMITH ARCHITECTURE
ARCHITECT OF RECORD
400 Galleria Officecentre Suite 555
Southfield, MI 48034
248.352.8310

SEIBER KEAST ENGINEERING
CIVIL ENGINEER
100 MainCentre Suite 10
Northville, MI 48167
248.308.3331

GRISSIM METZ ANDRIESE
LANDSCAPE ARCHITECT
15000 Edward N Hines Drive, Suite A
Plymouth, MI 48170
248.347.7010

PROJECT NUMBER: 20090

DATE: 12/14/2021

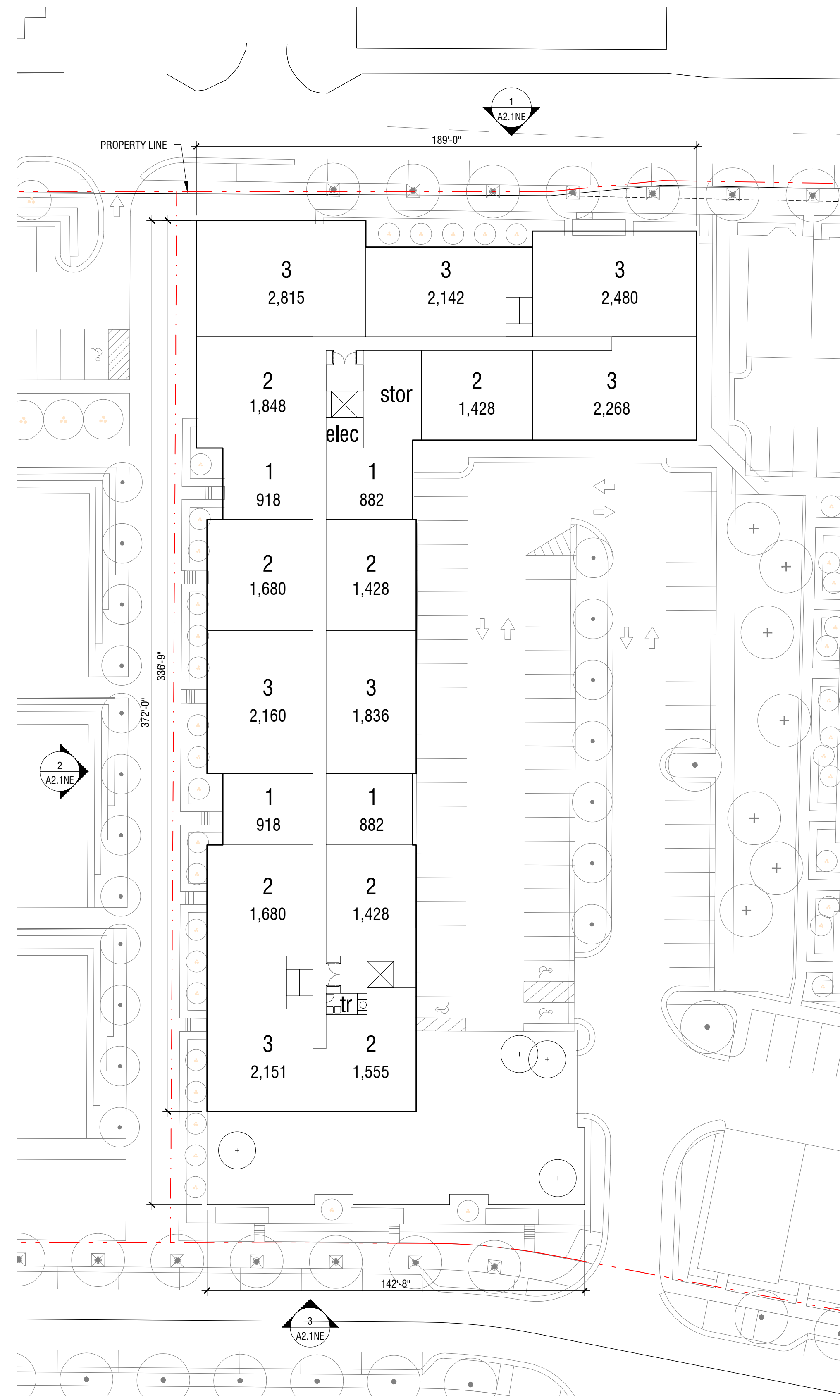
REVISIONS:
12/14/2021 Preliminary Site
Plan Approval
1/18/2022 Review Comments

SCALE: 1" = 30'-0"

DRAWING NAME:
**NORTHEAST SITE
LEVEL 2
FLOOR PLAN**

DRAWING NUMBER:

A1.4NE



1 NORTHEAST SITE - LEVEL 2
SCALE: 1" = 30'-0"



THE DOWNS
Northville, Michigan

HUNTER PASTEUR, NORTHVILLE LLC
OWNER
32300 Northwestern Hwy
Suite 230
Farmington Hills, MI 48334

NEUMANN SMITH ARCHITECTURE
ARCHITECT OF RECORD
400 Galleria Officecentre Suite 555
Southfield, MI 48034
248.352.8310

SEIBER KEAST ENGINEERING
CIVIL ENGINEER
100 MainCentre Suite 10
Northville, MI 48167
248.308.3331

GRISSIM METZ ANDRIESE
LANDSCAPE ARCHITECT
15000 Edward N Hines Drive, Suite A
Plymouth, MI 48170
248.347.7010

PROJECT NUMBER: 20090

DATE: 12/14/2021

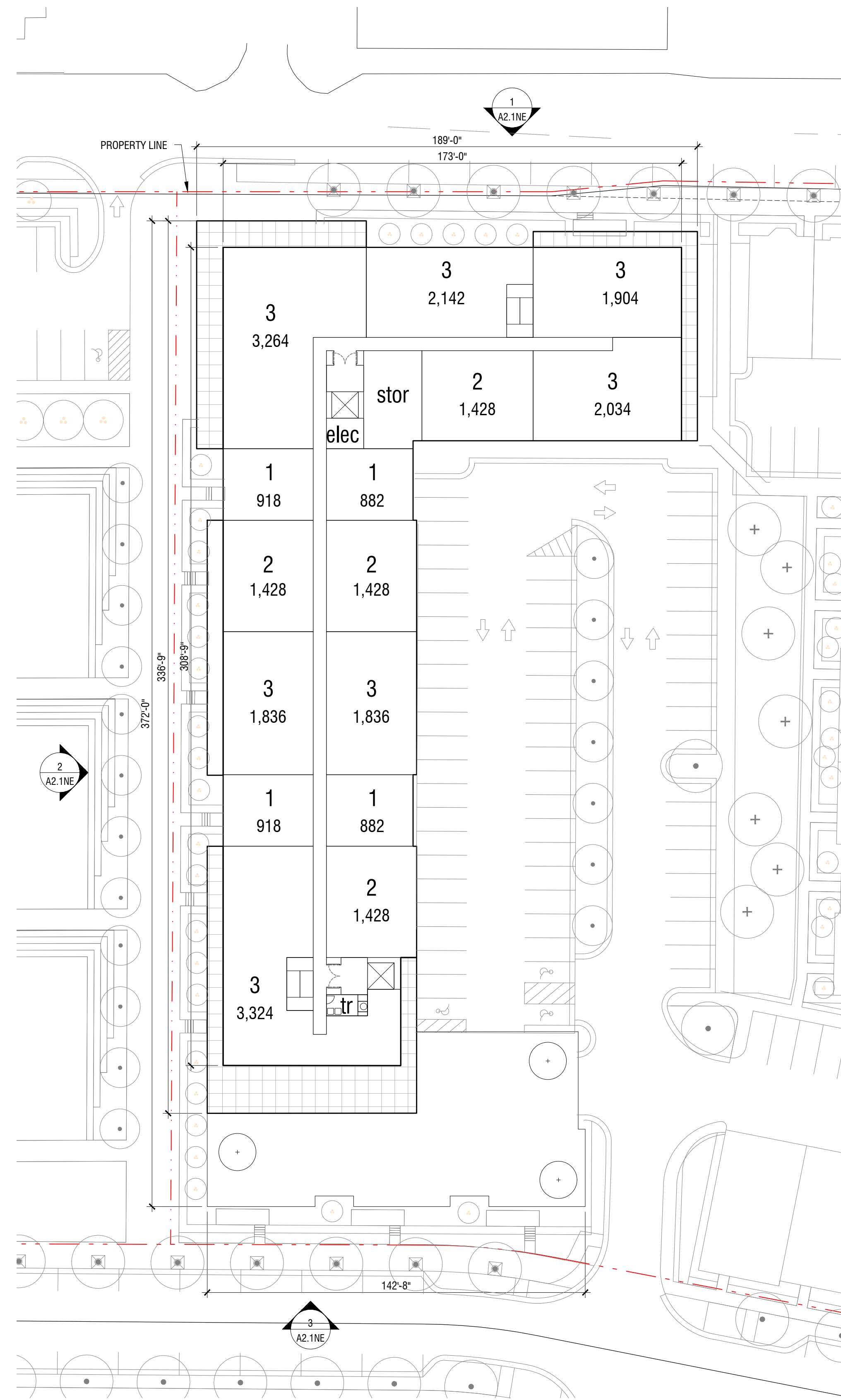
REVISIONS:
12/14/2021 Preliminary Site
Plan Approval
1/18/2022 Review Comments

SCALE: 1" = 30'-0"

DRAWING NAME:
**NORTHEAST SITE
LEVEL 3
FLOOR PLAN**

DRAWING NUMBER:

A1.5NE



1 NORTHEAST SITE - LEVEL 3
SCALE: 1" = 30'-0"

THE DOWNS

Northville, Michigan

HUNTER PASTEUR, NORTHVILLE LLC
OWNER

32300 Northwestern Hwy
Suite 230
Farmington Hills, MI 48334

NEUMANN SMITH ARCHITECTURE
ARCHITECT OF RECORD

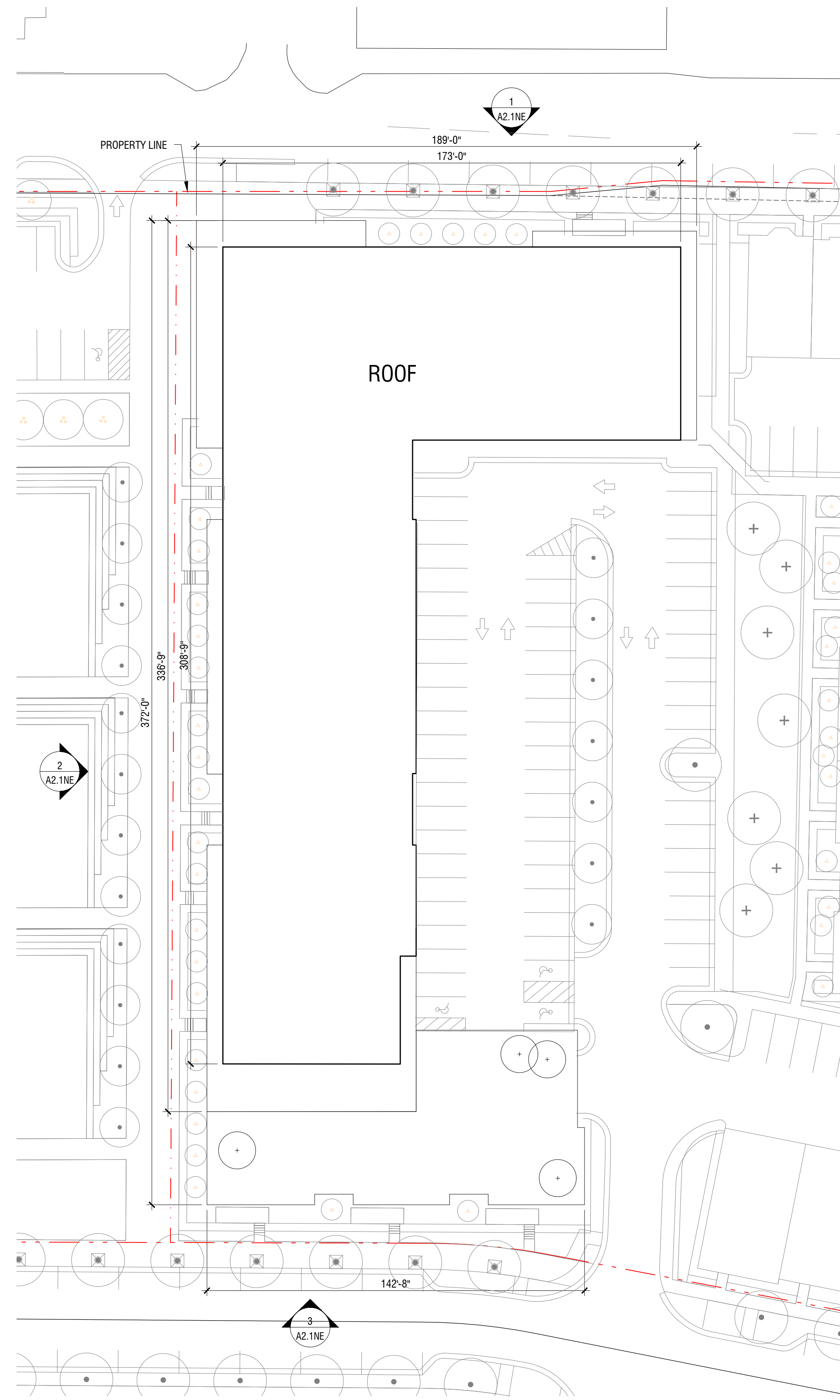
400 Galleria Officecentre Suite 555
Southfield, MI 48034
248.352.8310

SEIBER KEAST ENGINEERING
CIVIL ENGINEER

100 MainCentre Suite 10
Northville, MI 48167
248.308.3331

GRISSIM METZ ANDRIESE
LANDSCAPE ARCHITECT

15000 Edward N Hines Drive, Suite A
Plymouth, MI 48170
248.347.7010



1 NORTHEAST SITE - ROOF LEVEL

SCALE: 1" = 30'-0"



PROJECT NUMBER: 20090

DATE: 12/14/2021

REVISIONS:

12/14/2021 Preliminary Site
Plan Approval

1/18/2022 Review Comments

SCALE: 1" = 30'-0"

DRAWING NAME:

**NORTHEAST SITE
ROOF LEVEL
FLOOR PLAN**

DRAWING NUMBER:

A1.6NE

THE DOWNS
Northville, Michigan

HUNTER PASTEUR, NORTHVILLE LLC
OWNER
32300 Northwestern Hwy
Suite 230
Farmington Hills, MI 48334

NEUMANN SMITH ARCHITECTURE
ARCHITECT OF RECORD
400 Galleria Officecentre Suite 555
Southfield, MI 48034
248.352.8310

SEIBER KEAST ENGINEERING
CIVIL ENGINEER
100 MainCentre Suite 10
Northville, MI 48167
248.308.3331

GRISSIM METZ ANDRIESE
LANDSCAPE ARCHITECT
15000 Edward N Hines Drive, Suite A
Plymouth, MI 48170
248.347.7010

PROJECT NUMBER: 20090

DATE: 12/14/2021

REVISIONS:	
12/14/2021	Preliminary Site Plan Approval
1/18/2022	Review Comments

SCALE: 1/16" = 1'-0"

DRAWING NAME:
**NORTHEAST SITE
PUBLIC WAY
ELEVATIONS**

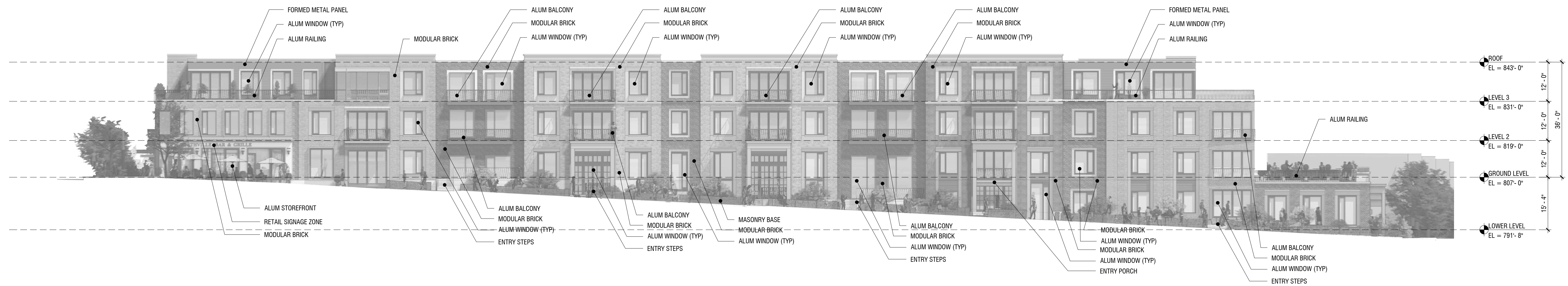
DRAWING NUMBER:

A2.1NE



3 NORTHEAST SITE - SOUTH (BEAL STREET) ELEVATION

SCALE: 1/16" = 1'-0"



2 NORTHEAST SITE - WEST (HUTTON STREET) ELEVATION

SCALE: 1/16" = 1'-0"



1 NORTHEAST SITE - NORTH (CADY STREET) ELEVATION

SCALE: 1/16" = 1'-0"