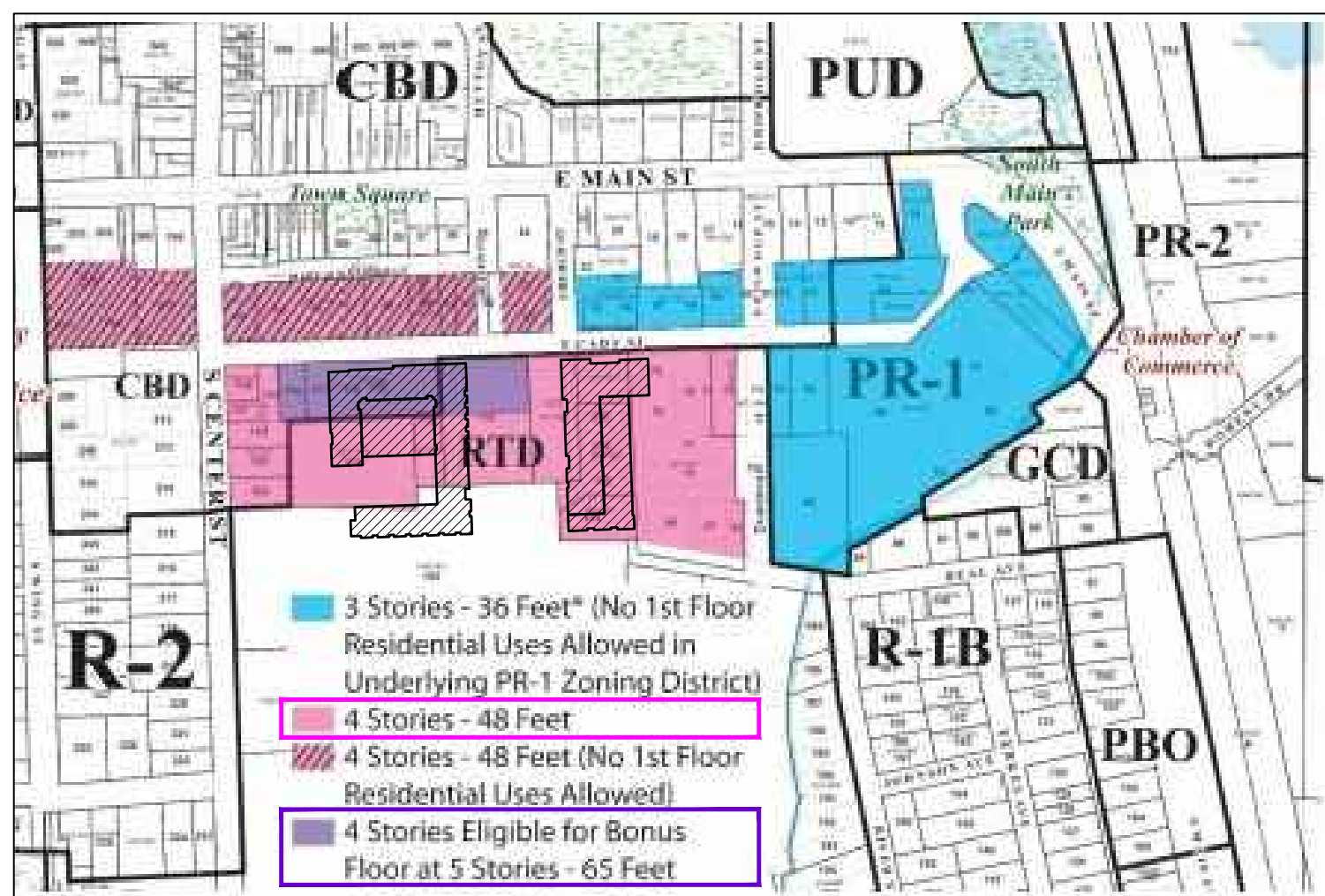
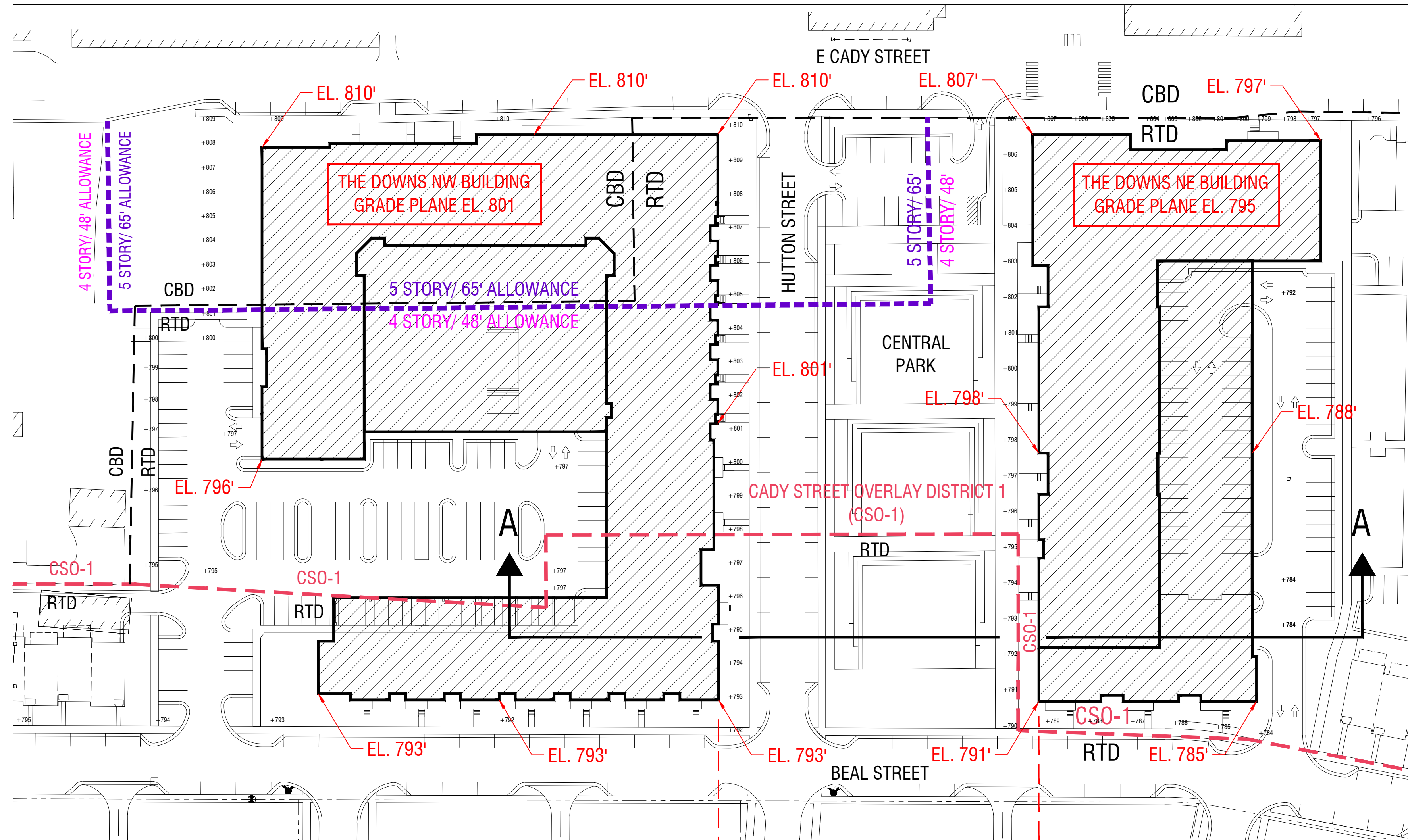


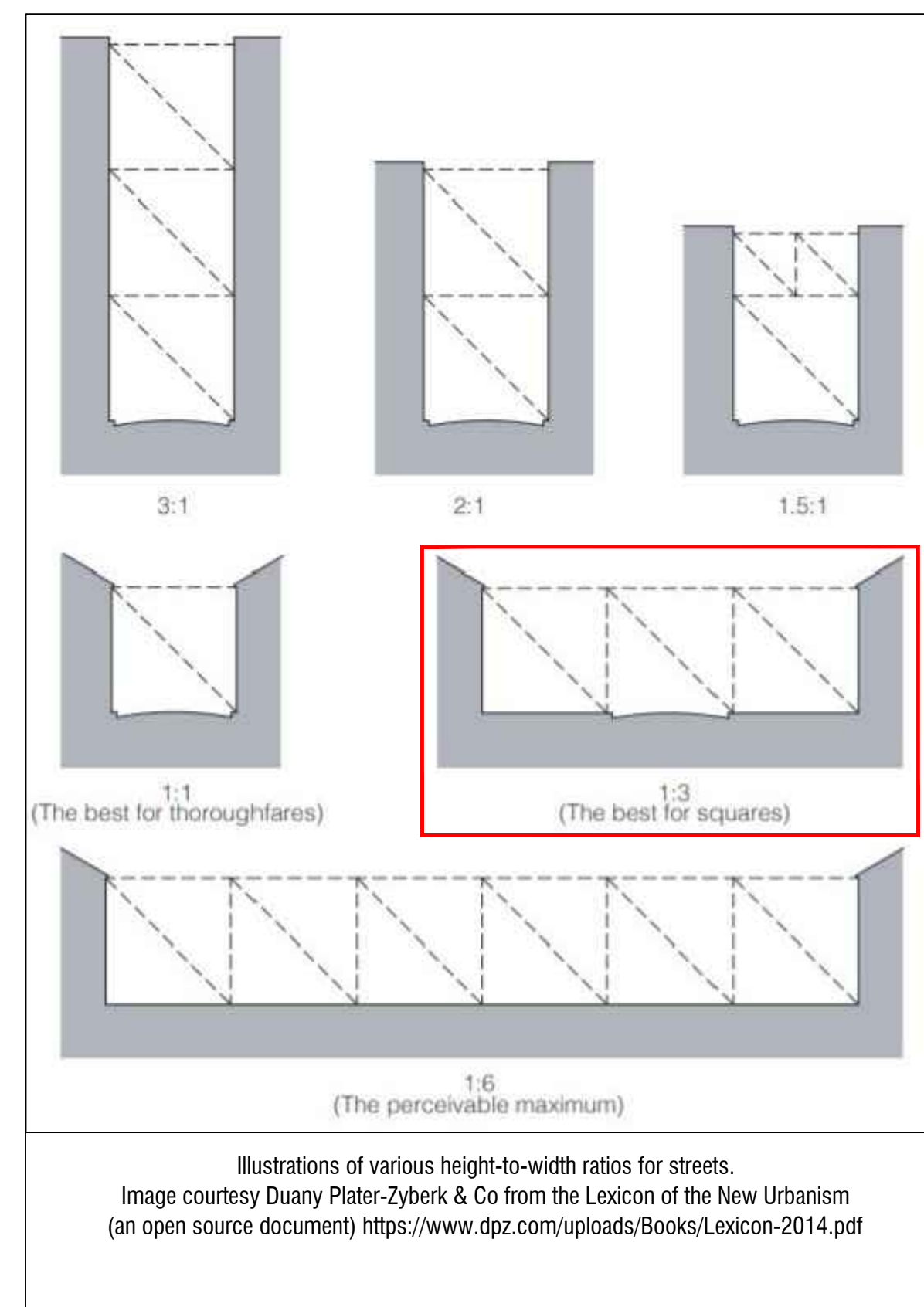
**1 CADY STREET OVERLAY DISTRICT BOUNDARY - NORTHVILLE ZONING ARTICLE 10 FIGURE 5**  
SCALE: NTS



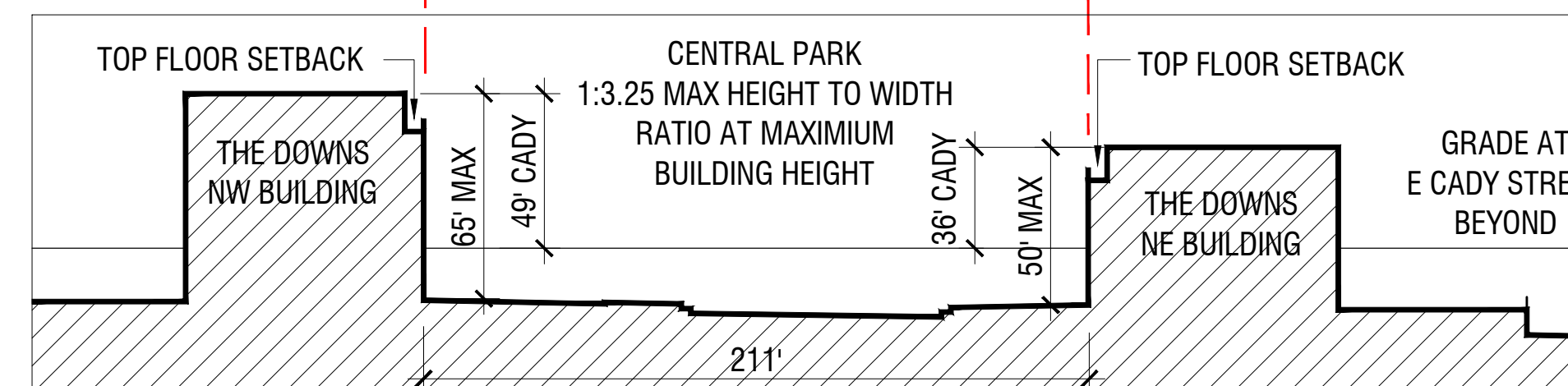
**2 BUILDING HEIGHT ALLOWANCE - NORTHVILLE ZONING ARTICLE 10 FIGURE 7**  
SCALE: NTS



**3 ZONING OVERLAY AND GRADE PLANE CALCULATION - PLAN DIAGRAM**  
SCALE: 1" = 50'-0" 0 25 50 100



**5 IDEAL CITY SQUARE HEIGHT TO WIDTH RATIO - DIAGRAM**  
SCALE: NTS



**4 SECTION AA - CENTRAL PARK HEIGHT TO WIDTH RATIO**  
SCALE: 1" = 50'-0" 0 25 50 100



**6 CENTRAL PARK HEIGHT TO WIDTH RATIO - PERSPECTIVE VIEW**  
SCALE: NTS

**THE DOWNS**  
Northville, Michigan

HUNTER PASTEUR, NORTHVILLE LLC  
OWNER  
32300 Northwestern Hwy  
Suite 230  
Farmington Hills, MI 48334

NEUMANN SMITH ARCHITECTURE  
ARCHITECT OF RECORD  
400 Galleria Office Centre Suite 555  
Southfield, MI 48034  
248.352.8310

SEIBER KEAST ENGINEERING  
CIVIL ENGINEER  
100 Main Centre Suite 10  
Northville, MI 48167  
248.308.3331

GRISSIM METZ ANDRIESE  
LANDSCAPE ARCHITECT  
15000 Edward N Hines Drive, Suite A  
Plymouth, MI 48170  
248.347.7010

PROJECT NUMBER: 20090

DATE: 12/14/2021

REVISIONS:  
12/14/2021 Preliminary Site  
Plan Approval

SCALE: AS NOTED

DRAWING NAME:  
**NORTHVILLE  
BUILDING HEIGHTS  
DIAGRAM**

DRAWING NUMBER:

**THE DOWNS**  
Northville, Michigan

HUNTER PASTEUR, NORTHVILLE LLC  
OWNER  
32300 Northwestern Hwy  
Suite 230  
Farmington Hills, MI 48334

NEUMANN SMITH ARCHITECTURE  
ARCHITECT OF RECORD  
400 Galleria Office Centre Suite 555  
Southfield, MI 48034  
248.352.8310

SEIBER KEAST ENGINEERING  
CIVIL ENGINEER  
100 Main Centre Suite 10  
Northville, MI 48167  
248.308.3331

GRISSIM METZ ANDRIESE  
LANDSCAPE ARCHITECT  
15000 Edward N Hines Drive, Suite A  
Plymouth, MI 48170  
248.347.7010

PROJECT NUMBER: 20090

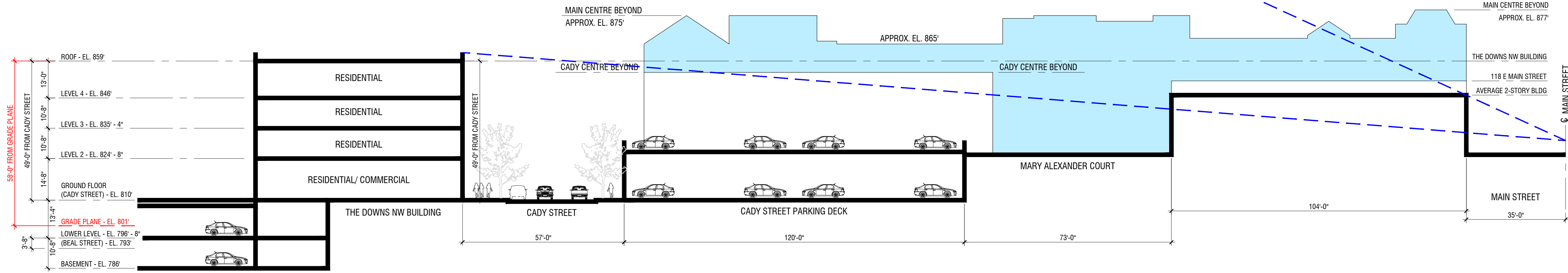
DATE: 12/14/2021

REVISIONS:  
12/14/2021 Preliminary Site  
Plan Approval

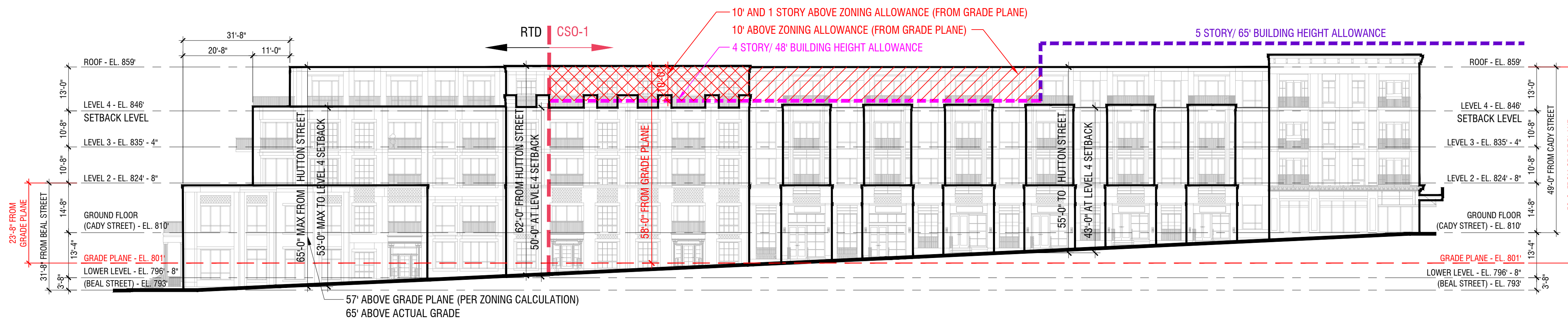
SCALE: AS NOTED

DRAWING NAME:  
**NORTHVILLE  
BUILDING HEIGHTS  
DIAGRAM**

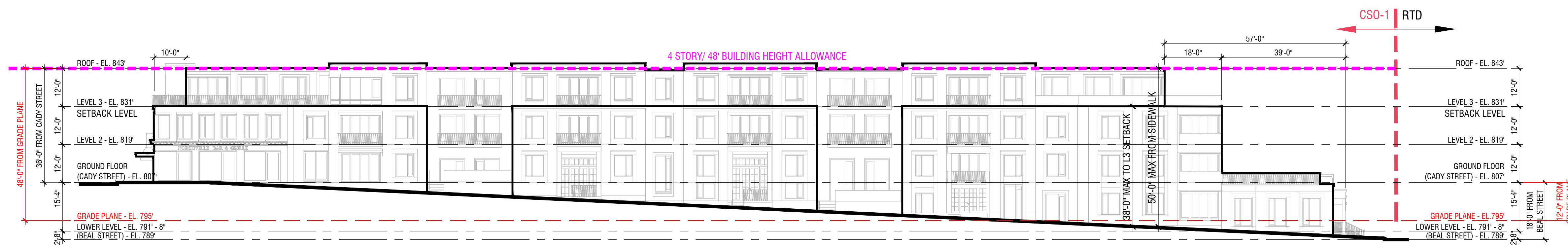
DRAWING NUMBER:



**1 SECTION THROUGH NW BUILDING/ CADY STREET/ MAIN STREET**  
SCALE: 1" = 20'-0"



**2 NW BUILDING EAST ELEVATION (FACING HUTTON STREET)**  
SCALE: 1" = 20'-0"



**3 NE BUILDING EAST ELEVATION (FACING HUTTON STREET)**  
SCALE: 1" = 20'-0"

### THE DOWNS

Northville, Michigan

HUNTER PASTEUR, NORTHVILLE LLC  
OWNER

32300 Northwestern Hwy  
Suite 230  
Farmington Hills, MI 48334

NEUMANN SMITH ARCHITECTURE  
ARCHITECT OF RECORD

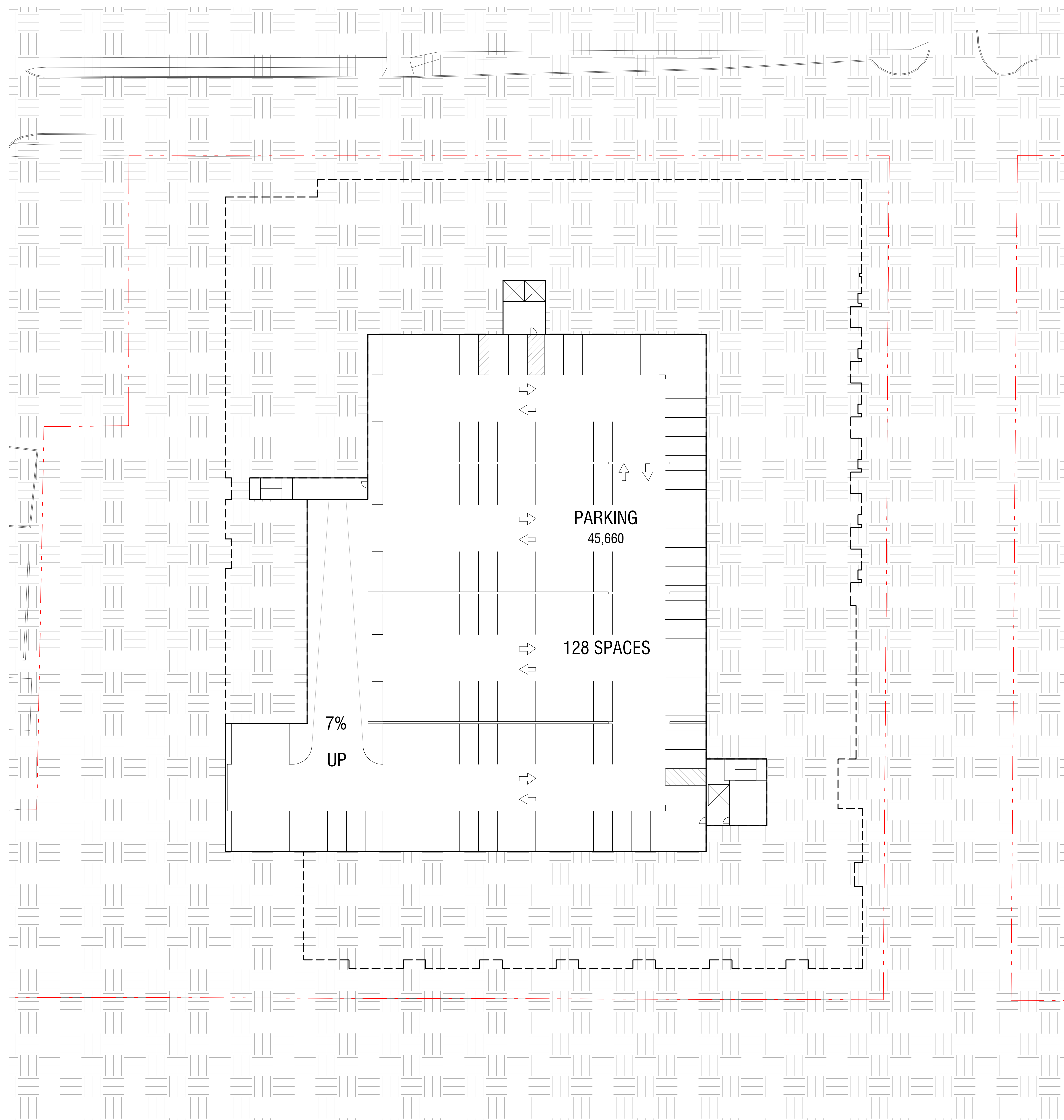
400 Galleria Officecentre Suite 555  
Southfield, MI 48034  
248.352.8310

SEIBER KEAST ENGINEERING  
CIVIL ENGINEER

100 MainCentre Suite 10  
Northville, MI 48167  
248.308.3331

GRISSIM METZ ANDRIESE  
LANDSCAPE ARCHITECT

15000 Edward N Hines Drive, Suite A  
Plymouth, MI 48170  
248.347.7010



**1** NORTHWEST SITE - BASEMENT LEVEL  
SCALE: 1" = 30'-0"



PROJECT NUMBER: 20090

DATE: 12/14/2021

REVISIONS:  
12/14/2021 Preliminary Site  
Plan Approval

SCALE: 1" = 30'-0"

DRAWING NAME:  
NORTHWEST SITE  
BASEMENT LEVEL  
FLOOR PLAN

DRAWING NUMBER:

# A1.1NW

THE DOWNS

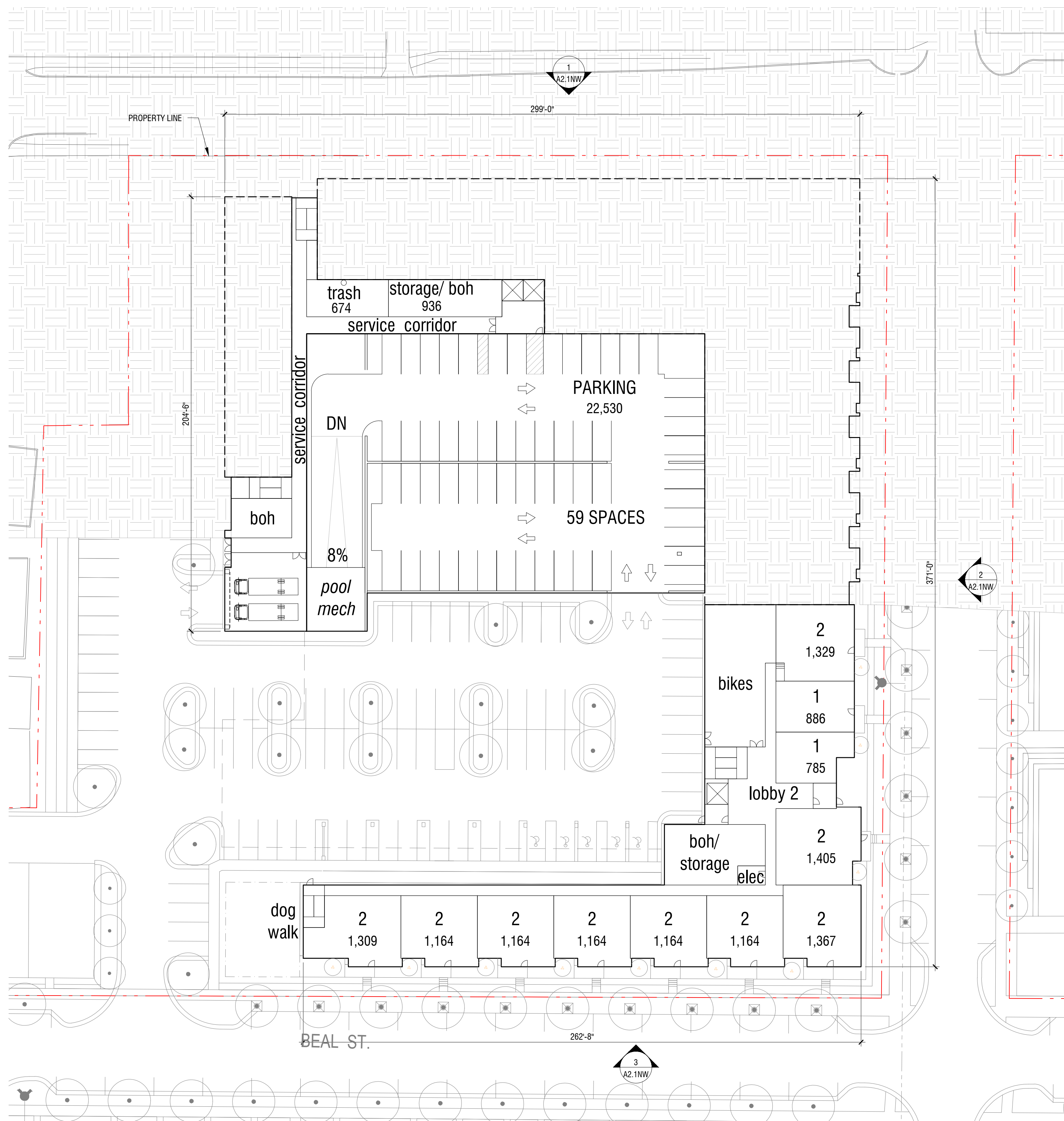
Northville, Michigan

HUNTER PASTEUR, NORTHVILLE LLC  
OWNER  
32300 Northwestern Hwy  
Suite 230  
Farmington Hills, MI 48334

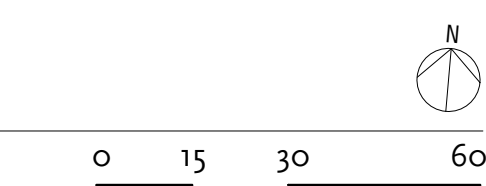
NEUMANN SMITH ARCHITECTURE  
ARCHITECT OF RECORD  
400 Galleria Officecentre Suite 555  
Southfield, MI 48034  
248.352.8310

SEIBER KEAST ENGINEERING  
CIVIL ENGINEER  
100 MainCentre Suite 10  
Northville, MI 48167  
248.308.3331

GRISSIM METZ ANDRIESE  
LANDSCAPE ARCHITECT  
15000 Edward N Hines Drive, Suite A  
Plymouth, MI 48170  
248.347.7010



**1** NORTHWEST SITE - LOWER LEVEL  
SCALE: 1" = 30'-0"



PROJECT NUMBER: 20090

DATE: 12/14/2021

REVISIONS:  
12/14/2021 Preliminary Site  
Plan Approval

SCALE: 1" = 30'-0"

DRAWING NAME:  
NORTHWEST SITE  
LOWER LEVEL  
FLOOR PLAN

DRAWING NUMBER:

**A1.2NW**

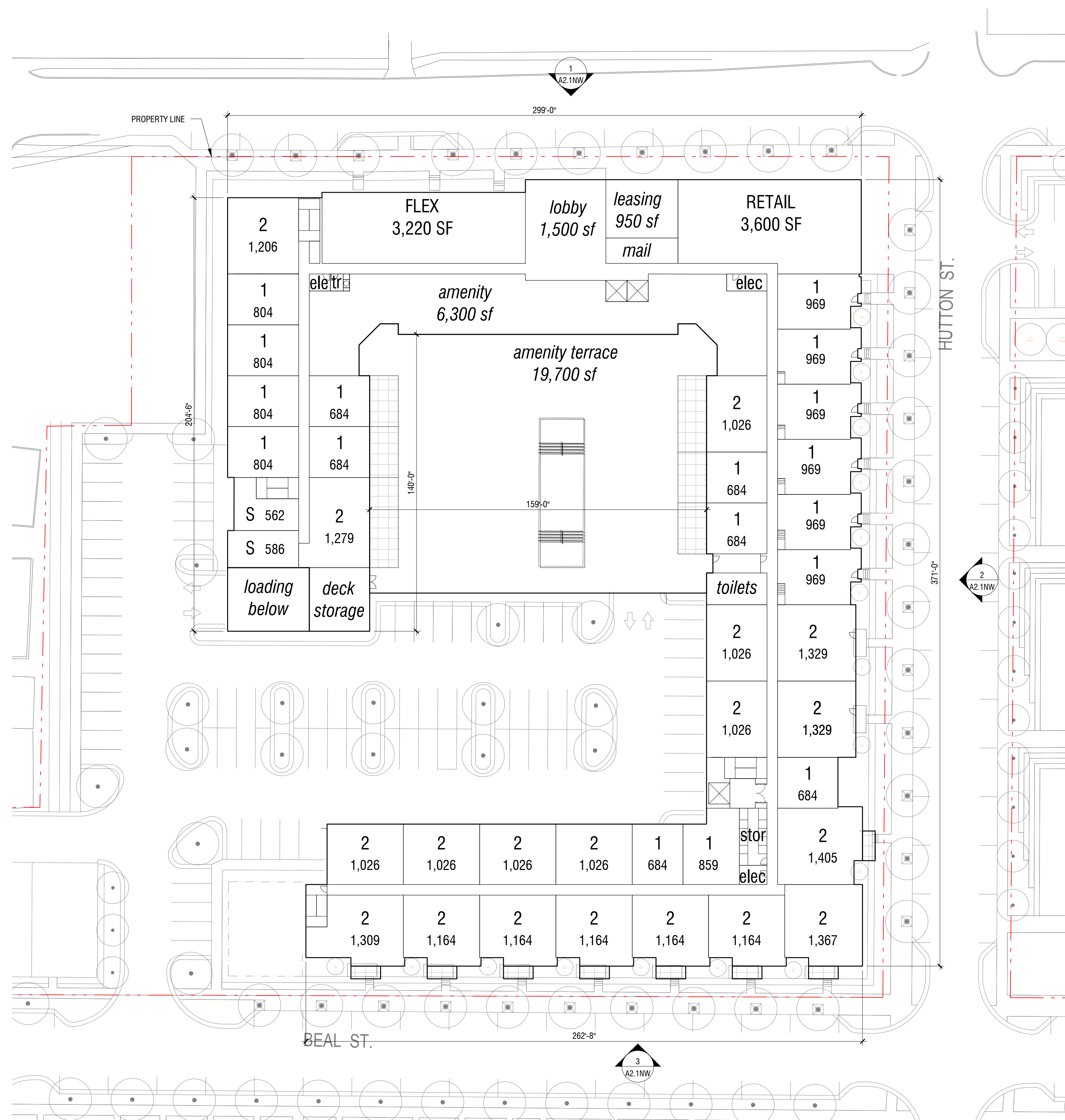
**THE DOWNS**  
Northville, Michigan

HUNTER PASTEUR, NORTHVILLE LLC  
OWNER  
32300 Northwestern Hwy  
Suite 230  
Farmington Hills, MI 48334

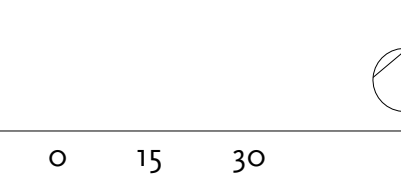
NEUMANN SMITH ARCHITECTURE  
ARCHITECT OF RECORD  
400 Galleria Offcentre Suite 555  
Southfield, MI 48034  
248.352.8310

SEIBER KEAST ENGINEERING  
CIVIL ENGINEER  
100 MainCentre Suite 10  
Northville, MI 48167  
248.308.3331

GRISSIM METZ ANDRIESE  
LANDSCAPE ARCHITECT  
15000 Edward N Hines Drive, Suite A  
Plymouth, MI 48170  
248.347.7010



**1** NORTHWEST SITE - GROUND LEVEL  
SCALE: 1" = 30'-0"



PROJECT NUMBER: 20090

DATE: 12/14/2021

REVISIONS:  
12/14/2021 Preliminary Site  
Plan Approval

SCALE: 1" = 30'-0"

DRAWING NAME:  
**NORTHWEST SITE  
GROUND LEVEL  
FLOOR PLAN**

DRAWING NUMBER:

**A1.3NW**

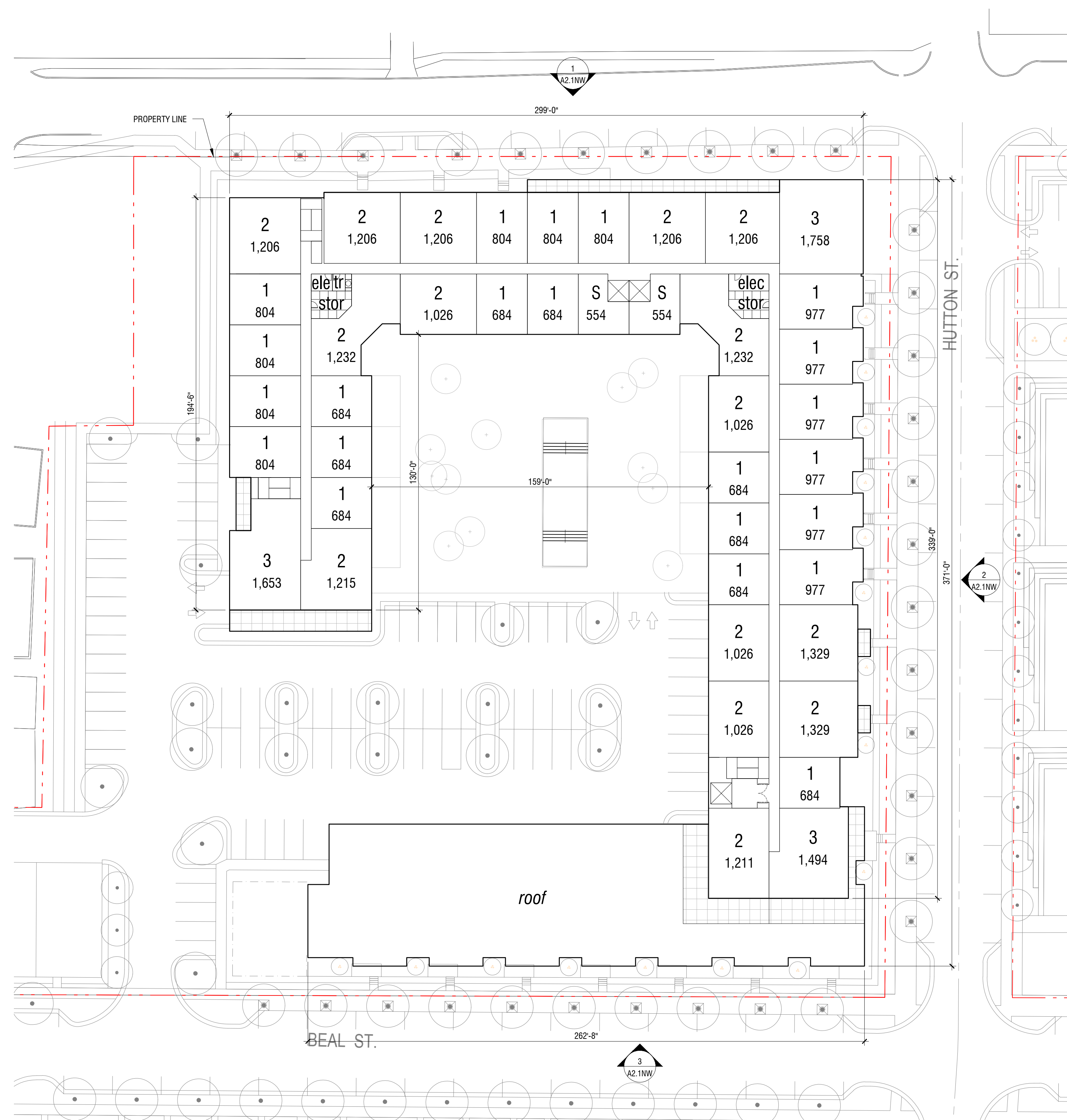
**THE DOWNS**  
Northville, Michigan

HUNTER PASTEUR, NORTHVILLE LLC  
OWNER  
32300 Northwestern Hwy  
Suite 230  
Farmington Hills, MI 48334

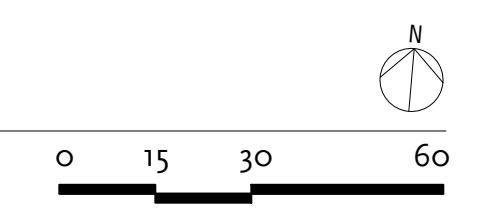
NEUMANN SMITH ARCHITECTURE  
ARCHITECT OF RECORD  
400 Galleria Offcentre Suite 555  
Southfield, MI 48034  
248.352.8310

SEIBER KEAST ENGINEERING  
CIVIL ENGINEER  
100 MainCentre Suite 10  
Northville, MI 48167  
248.308.3331

GRISSIM METZ ANDRIESE  
LANDSCAPE ARCHITECT  
15000 Edward N Hines Drive, Suite A  
Plymouth, MI 48170  
248.347.7010



**1** NORTHWEST SITE - LEVEL 2  
SCALE: 1" = 30'-0"



PROJECT NUMBER: 20090

DATE: 12/14/2021

REVISIONS:  
12/14/2021 Preliminary Site  
Plan Approval

SCALE: 1" = 30'-0"

DRAWING NAME:  
**NORTHWEST SITE  
LEVEL 2  
FLOOR PLAN**

DRAWING NUMBER:

**A1.4NW**

**THE DOWNS**  
Northville, Michigan

HUNTER PASTEUR, NORTHVILLE LLC  
OWNER  
32300 Northwestern Hwy  
Suite 230  
Farmington Hills, MI 48334

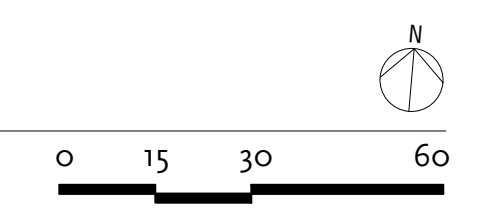
NEUMANN SMITH ARCHITECTURE  
ARCHITECT OF RECORD  
400 Galleria Officecentre Suite 555  
Southfield, MI 48034  
248.352.8310

SEIBER KEAST ENGINEERING  
CIVIL ENGINEER  
100 MainCentre Suite 10  
Northville, MI 48167  
248.308.3331

GRISSIM METZ ANDRIESE  
LANDSCAPE ARCHITECT  
15000 Edward N Hines Drive, Suite A  
Plymouth, MI 48170  
248.347.7010



**1** NORTHWEST SITE - LEVEL 3  
SCALE: 1" = 30'-0"



PROJECT NUMBER: 20090

DATE: 12/14/2021

REVISIONS:  
12/14/2021 Preliminary Site  
Plan Approval

SCALE: 1" = 30'-0"

DRAWING NAME:  
**NORTHWEST SITE  
LEVEL 3  
FLOOR PLAN**

DRAWING NUMBER:

**A1.5NW**

**THE DOWNS**  
Northville, Michigan

HUNTER PASTEUR, NORTHVILLE LLC  
OWNER  
32300 Northwestern Hwy  
Suite 230  
Farmington Hills, MI 48334

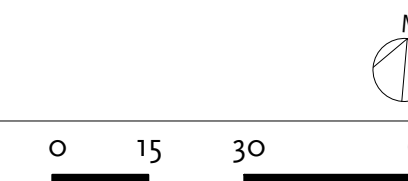
NEUMANN SMITH ARCHITECTURE  
ARCHITECT OF RECORD  
400 Galleria Officecentre Suite 555  
Southfield, MI 48034  
248.352.8310

SEIBER KEAST ENGINEERING  
CIVIL ENGINEER  
100 MainCentre Suite 10  
Northville, MI 48167  
248.308.3331

GRISSIM METZ ANDRIESE  
LANDSCAPE ARCHITECT  
15000 Edward N Hines Drive, Suite A  
Plymouth, MI 48170  
248.347.7010



**1** NORTHWEST SITE - LEVEL 4  
SCALE: 1" = 30'-0"



PROJECT NUMBER: 20090

DATE: 12/14/2021

REVISIONS:  
12/14/2021 Preliminary Site  
Plan Approval

SCALE: 1" = 30'-0"

DRAWING NAME:  
NORTHWEST SITE  
LEVEL 4  
FLOOR PLAN

DRAWING NUMBER:

**A1.6NW**



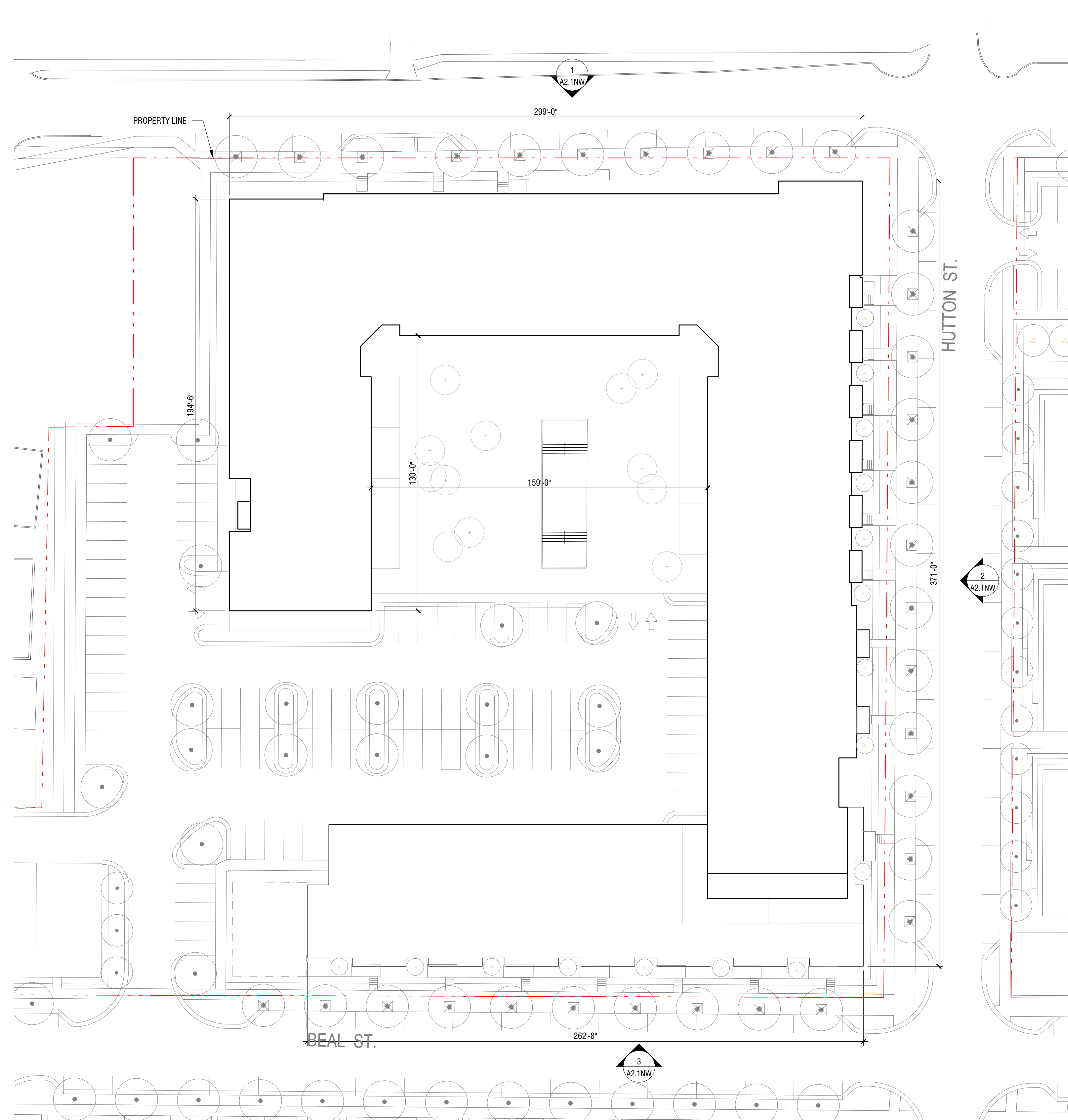
**THE DOWNS**  
Northville, Michigan

HUNTER PASTEUR, NORTHVILLE LLC  
OWNER  
32300 Northwestern Hwy  
Suite 230  
Farmington Hills, MI 48334

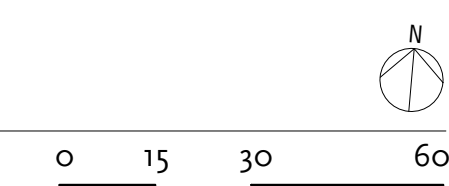
NEUMANN SMITH ARCHITECTURE  
ARCHITECT OF RECORD  
400 Galleria Officecentre Suite 555  
Southfield, MI 48034  
248.352.8310

SEIBER KEAST ENGINEERING  
CIVIL ENGINEER  
100 MainCentre Suite 10  
Northville, MI 48167  
248.308.3331

GRISSIM METZ ANDRIESE  
LANDSCAPE ARCHITECT  
15000 Edward N Hines Drive, Suite A  
Plymouth, MI 48170  
248.347.7010



**1** NORTHWEST SITE - ROOF LEVEL  
SCALE: 1" = 30'-0"



PROJECT NUMBER: 20090

DATE: 12/14/2021

REVISIONS:  
12/14/2021 Preliminary Site  
Plan Approval

SCALE: 1" = 30'-0"

DRAWING NAME:  
**NORTHWEST SITE  
ROOF LEVEL  
FLOOR PLAN**

DRAWING NUMBER:

**A1.7NW**

**THE DOWNS**  
Northville, Michigan

HUNTER PASTEUR, NORTHVILLE LLC  
OWNER  
32300 Northwestern Hwy  
Suite 230  
Farmington Hills, MI 48334

NEUMANN SMITH ARCHITECTURE  
ARCHITECT OF RECORD  
400 Galleria Officecentre Suite 555  
Southfield, MI 48034  
248.352.8310

SEIBER KEAST ENGINEERING  
CIVIL ENGINEER  
100 MainCentre Suite 10  
Northville, MI 48167  
248.308.3331

GRISSIM METZ ANDRIESE  
LANDSCAPE ARCHITECT  
15000 Edward N Hines Drive, Suite A  
Plymouth, MI 48170  
248.347.7010

PROJECT NUMBER: 20090

DATE: 12/14/2021

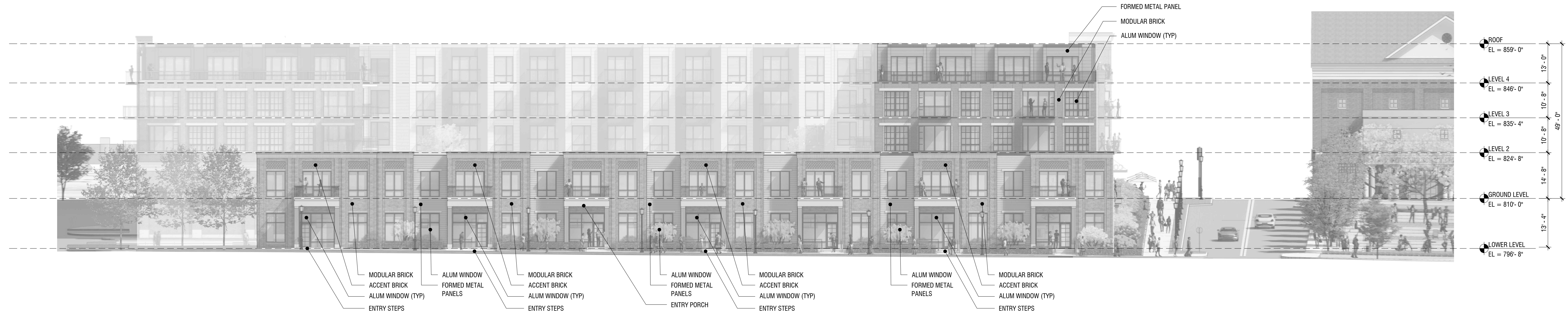
REVISIONS:  
12/14/2021 Preliminary Site  
Plan Approval

SCALE: 1/16" = 1'-0"

DRAWING NAME:  
**NORTHWEST SITE  
PUBLIC WAY  
ELEVATIONS**

DRAWING NUMBER:

**A2.1NW**



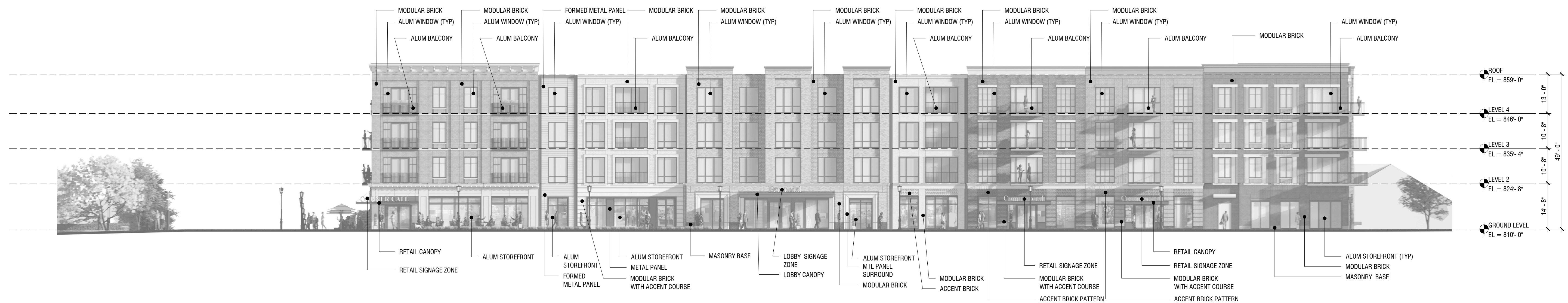
**3** NORTHWEST SITE - SOUTH (BEAL STREET) ELEVATION

SCALE: 1/16" = 1'-0"



**2** NORTHWEST SITE - EAST (HUTTON STREET) ELEVATION

SCALE: 1/16" = 1'-0"



**1** NORTHWEST SITE - NORTH (CADY STREET) ELEVATION

SCALE: 1/16" = 1'-0"

### THE DOWNS

Northville, Michigan

HUNTER PASTEUR, NORTHVILLE LLC  
OWNER

32300 Northwestern Hwy  
Suite 230  
Farmington Hills, MI 48334

NEUMANN SMITH ARCHITECTURE  
ARCHITECT OF RECORD

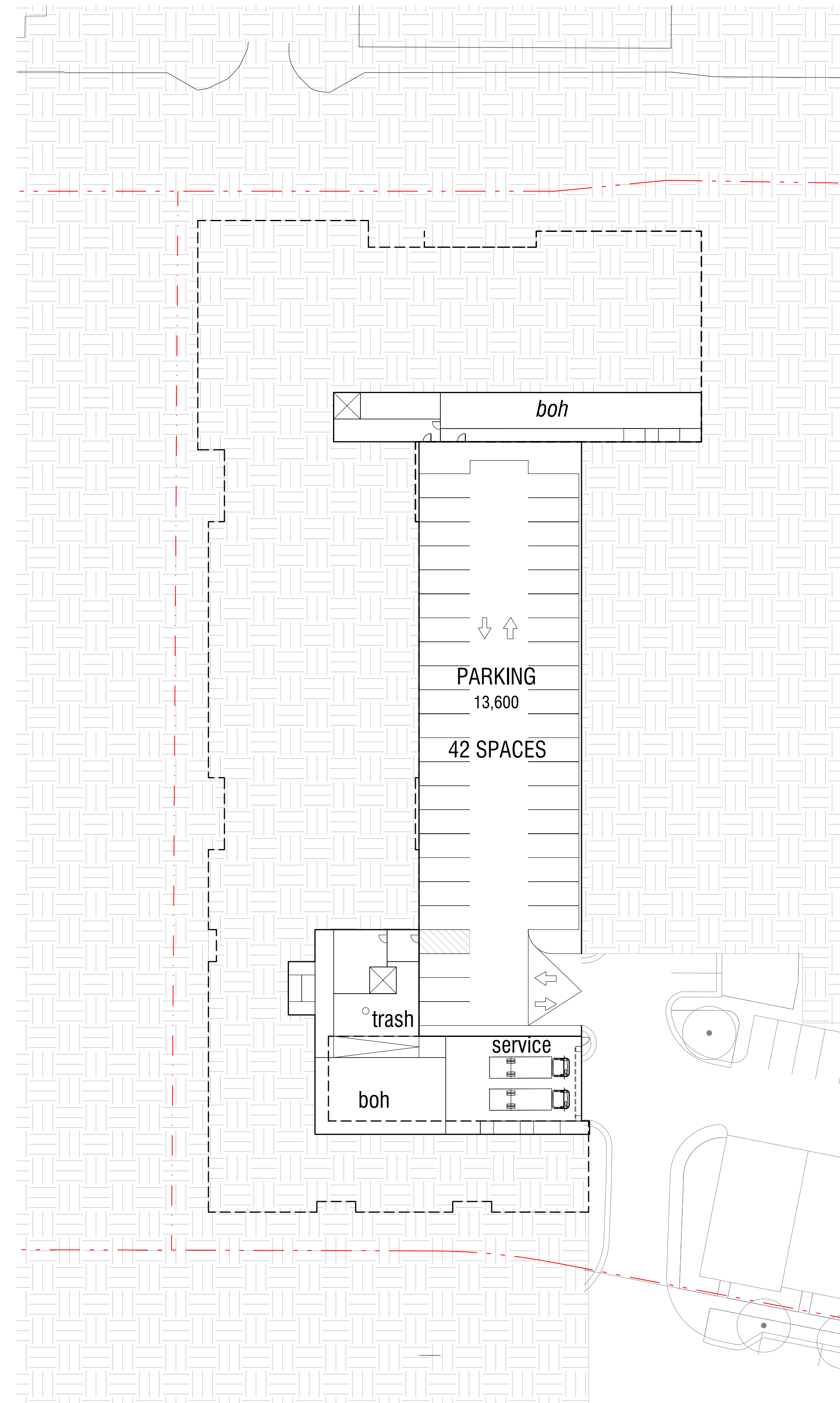
400 Galleria Officecentre Suite 555  
Southfield, MI 48034  
248.352.8310

SEIBER KEAST ENGINEERING  
CIVIL ENGINEER

100 MainCentre Suite 10  
Northville, MI 48167  
248.308.3331

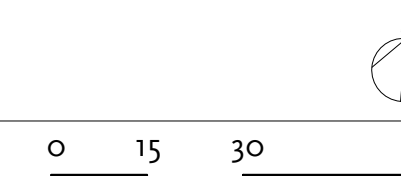
GRISSIM METZ ANDRIESE  
LANDSCAPE ARCHITECT

15000 Edward N Hines Drive, Suite A  
Plymouth, MI 48170  
248.347.7010



**1** NORTHEAST SITE - BASEMENT LEVEL

SCALE: 1" = 30'-0"



PROJECT NUMBER: 20090

DATE: 12/14/2021

REVISIONS:  
12/14/2021 Preliminary Site  
Plan Approval

SCALE: 1" = 30'-0"

DRAWING NAME:  
NORTHEAST SITE  
BASEMENT LEVEL  
FLOOR PLAN

DRAWING NUMBER:

# A1.1NE

**THE DOWNS**

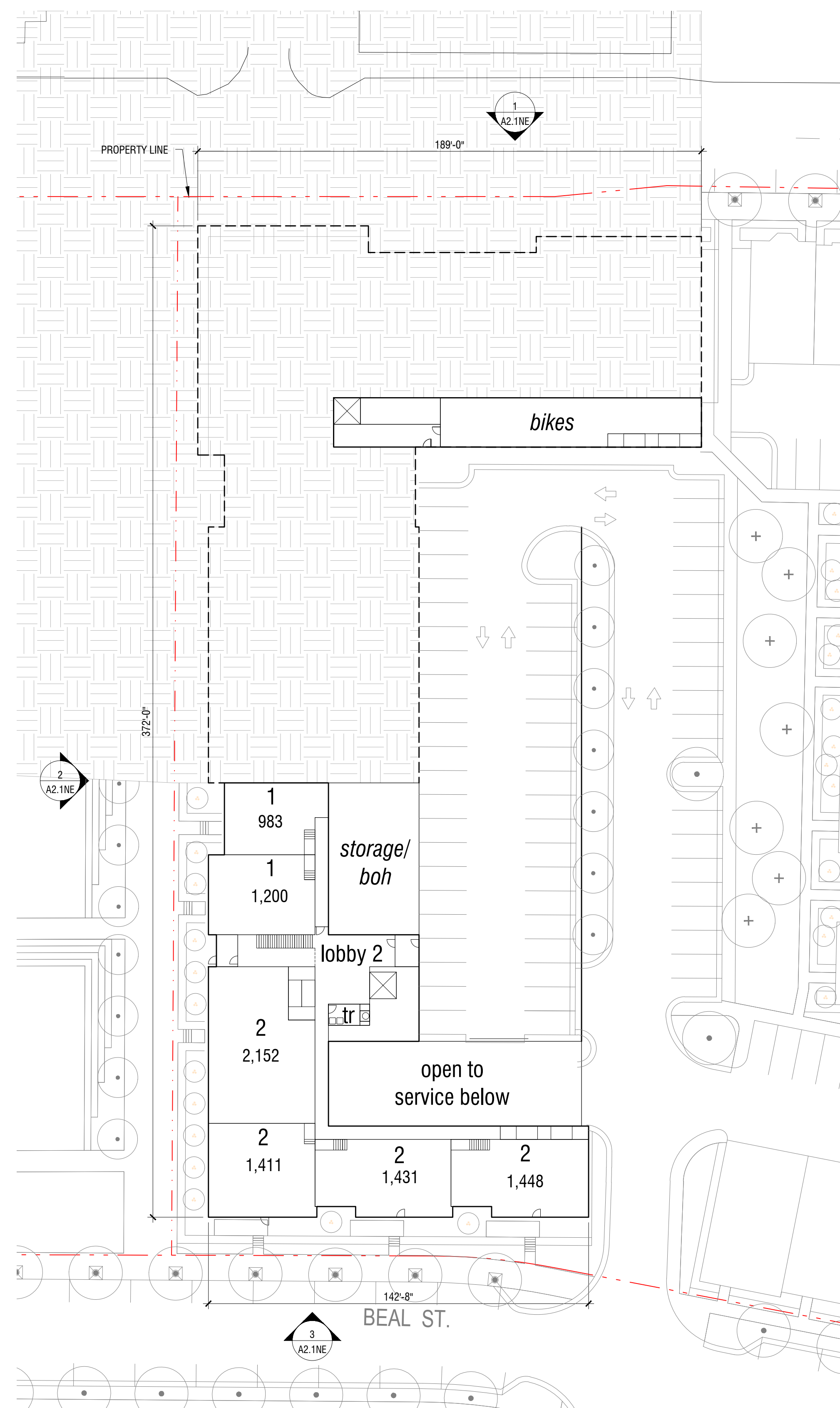
Northville, Michigan

HUNTER PASTEUR, NORTHVILLE LLC  
OWNER  
32300 Northwestern Hwy  
Suite 230  
Farmington Hills, MI 48334

NEUMANN SMITH ARCHITECTURE  
ARCHITECT OF RECORD  
400 Galleria Offcentre Suite 555  
Southfield, MI 48034  
248.352.8310

SEIBER KEAST ENGINEERING  
CIVIL ENGINEER  
100 MainCentre Suite 10  
Northville, MI 48167  
248.308.3331

GRISSIM METZ ANDRIESE  
LANDSCAPE ARCHITECT  
15000 Edward N Hines Drive, Suite A  
Plymouth, MI 48170  
248.347.7010



**1** NORTHEAST SITE - LOWER LEVEL  
SCALE: 1" = 30'-0"

PROJECT NUMBER: 20090

DATE: 12/14/2021

REVISIONS:  
12/14/2021 Preliminary Site  
Plan Approval

SCALE: 1" = 30'-0"

DRAWING NAME:  
**NORTHEAST SITE  
LOWER LEVEL  
FLOOR PLAN**

DRAWING NUMBER:

**A1.2NE**

**THE DOWNS**  
Northville, Michigan

HUNTER PASTEUR, NORTHVILLE LLC  
OWNER  
32300 Northwestern Hwy  
Suite 230  
Farmington Hills, MI 48334

NEUMANN SMITH ARCHITECTURE  
ARCHITECT OF RECORD  
400 Galleria Officecentre Suite 555  
Southfield, MI 48034  
248.352.8310

SEIBER KEAST ENGINEERING  
CIVIL ENGINEER  
100 MainCentre Suite 10  
Northville, MI 48167  
248.308.3331

GRISSIM METZ ANDRIESE  
LANDSCAPE ARCHITECT  
15000 Edward N Hines Drive, Suite A  
Plymouth, MI 48170  
248.347.7010

PROJECT NUMBER: 20090

DATE: 12/14/2021

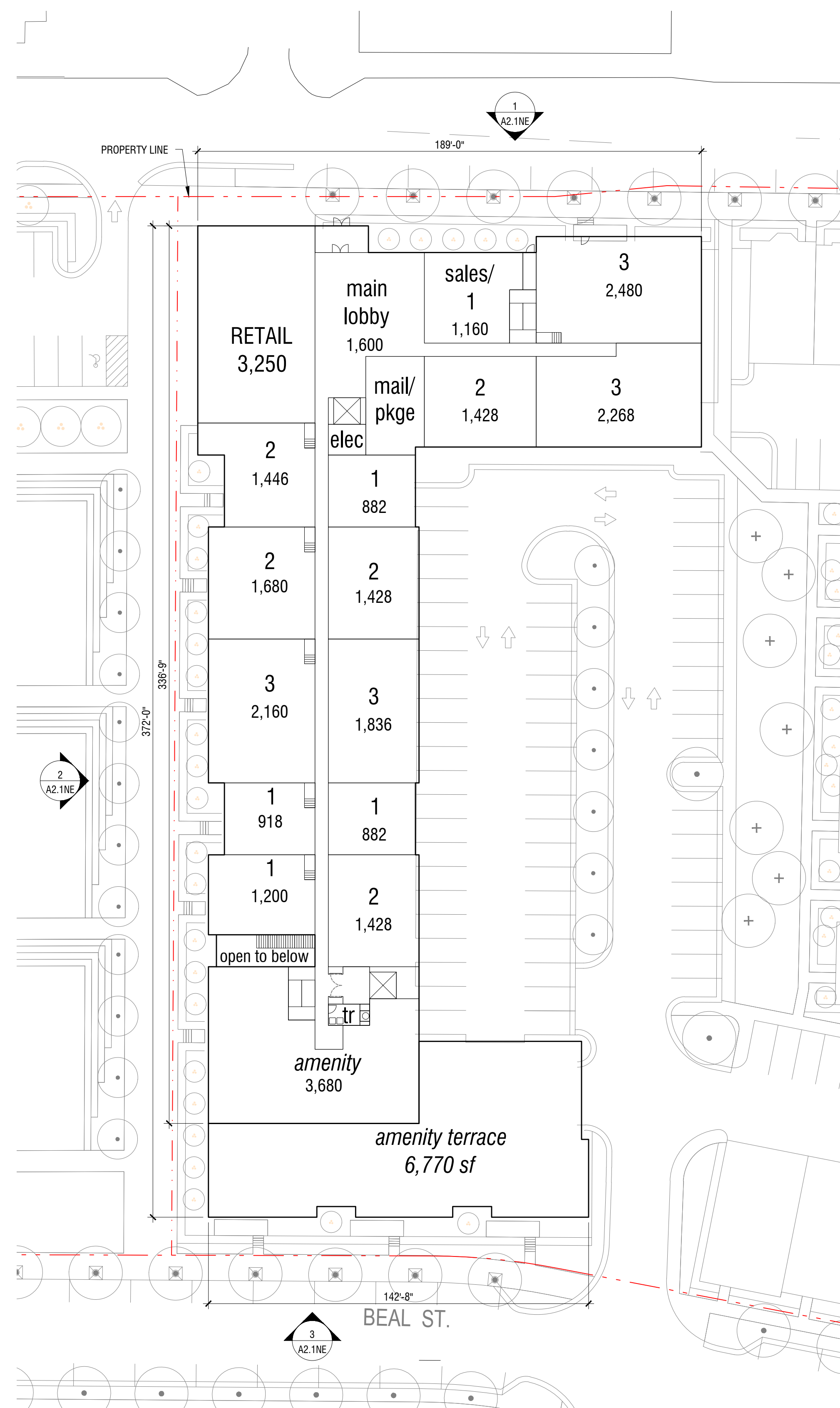
REVISIONS:  
12/14/2021 Preliminary Site  
Plan Approval

SCALE: 1" = 30'-0"

DRAWING NAME:  
**NORTHEAST SITE  
GROUND LEVEL  
FLOOR PLAN**

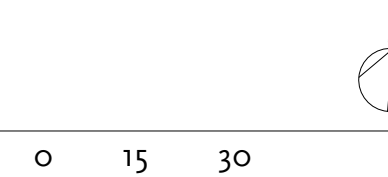
DRAWING NUMBER:

**A1.3NE**



**1** NORTHEAST SITE - GROUND LEVEL

SCALE: 1" = 30'-0"



**THE DOWNS**  
Northville, Michigan

HUNTER PASTEUR, NORTHVILLE LLC  
OWNER  
32300 Northwestern Hwy  
Suite 230  
Farmington Hills, MI 48334

NEUMANN SMITH ARCHITECTURE  
ARCHITECT OF RECORD  
400 Galleria Officecentre Suite 555  
Southfield, MI 48034  
248.352.8310

SEIBER KEAST ENGINEERING  
CIVIL ENGINEER  
100 MainCentre Suite 10  
Northville, MI 48167  
248.308.3331

GRISSIM METZ ANDRIESE  
LANDSCAPE ARCHITECT  
15000 Edward N Hines Drive, Suite A  
Plymouth, MI 48170  
248.347.7010

PROJECT NUMBER: 20090

DATE: 12/14/2021

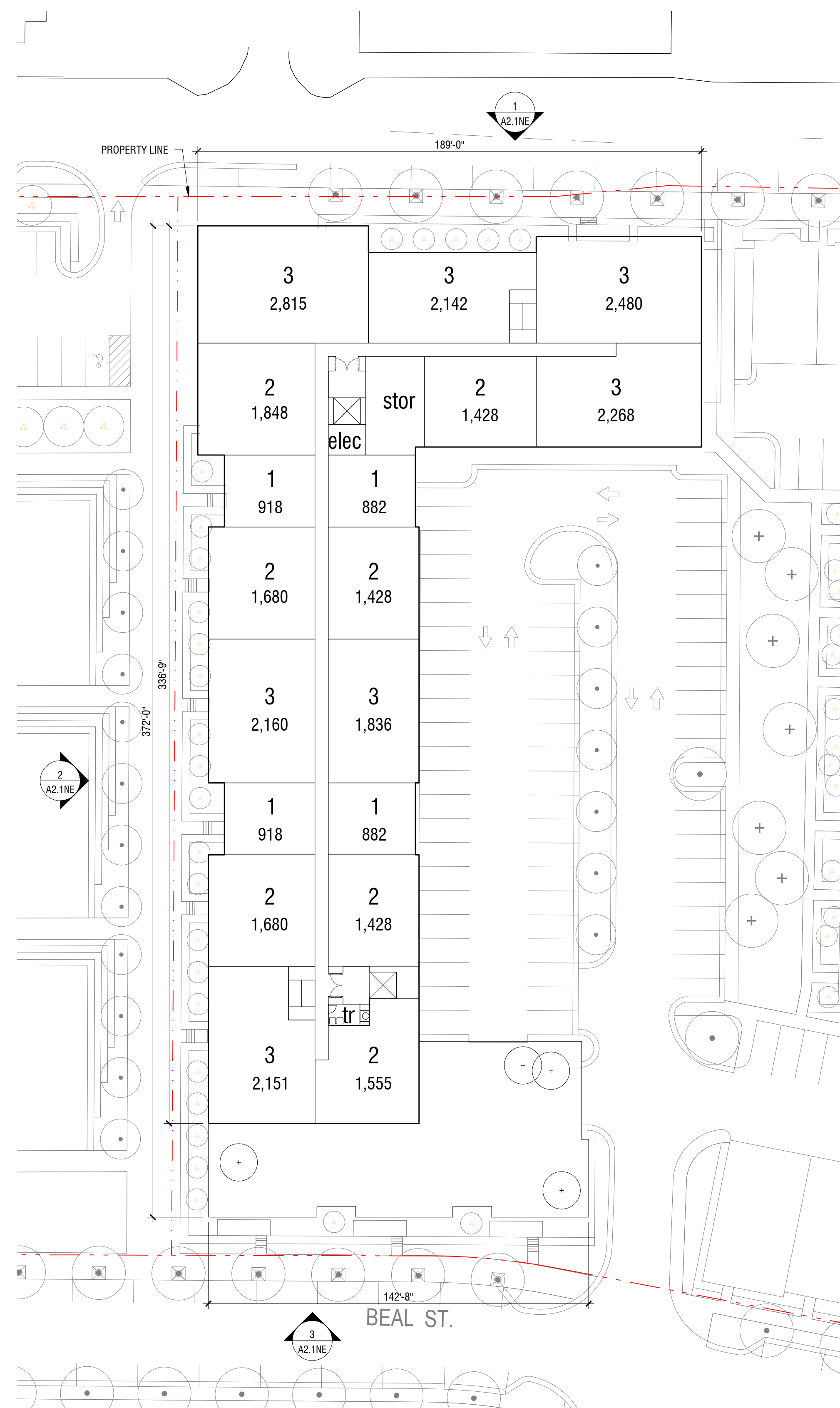
REVISIONS:  
12/14/2021 Preliminary Site  
Plan Approval

SCALE: 1" = 30'-0"

DRAWING NAME:  
**NORTHEAST SITE  
LEVEL 2  
FLOOR PLAN**

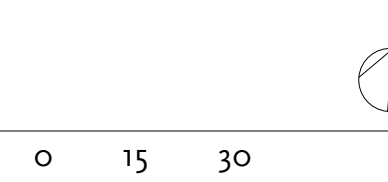
DRAWING NUMBER:

**A1.4NE**



**1** NORTHEAST SITE - LEVEL 2

SCALE: 1" = 30'-0"



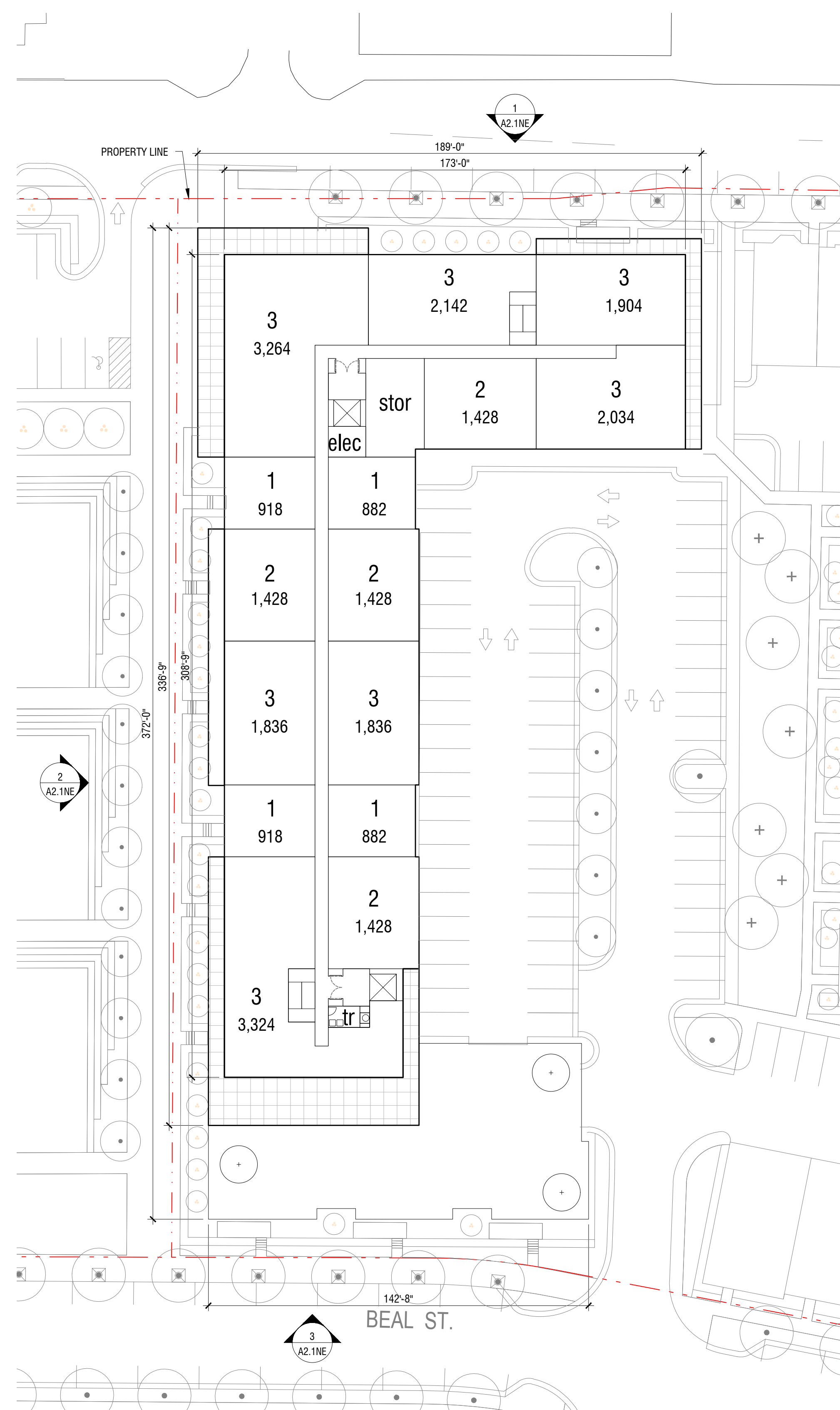
**THE DOWNS**  
Northville, Michigan

HUNTER PASTEUR, NORTHVILLE LLC  
OWNER  
32300 Northwestern Hwy  
Suite 230  
Farmington Hills, MI 48334

NEUMANN SMITH ARCHITECTURE  
ARCHITECT OF RECORD  
400 Galleria Officecentre Suite 555  
Southfield, MI 48034  
248.352.8310

SEIBER KEAST ENGINEERING  
CIVIL ENGINEER  
100 MainCentre Suite 10  
Northville, MI 48167  
248.308.3331

GRISSIM METZ ANDRIESE  
LANDSCAPE ARCHITECT  
15000 Edward N Hines Drive, Suite A  
Plymouth, MI 48170  
248.347.7010



**1** NORTHEAST SITE - LEVEL 3  
SCALE: 1" = 30'-0"



PROJECT NUMBER: 20090

DATE: 12/14/2021

REVISIONS:  
12/14/2021 Preliminary Site  
Plan Approval

SCALE: 1" = 30'-0"

DRAWING NAME:  
**NORTHEAST SITE  
LEVEL 3  
FLOOR PLAN**

DRAWING NUMBER:

**A1.5NE**

**THE DOWNS**

Northville, Michigan

HUNTER PASTEUR, NORTHVILLE LLC  
OWNER

32300 Northwestern Hwy  
Suite 230  
Farmington Hills, MI 48334

NEUMANN SMITH ARCHITECTURE  
ARCHITECT OF RECORD

400 Galleria Officecentre Suite 555  
Southfield, MI 48034  
248.352.8310

SEIBER KEAST ENGINEERING  
CIVIL ENGINEER

100 MainCentre Suite 10  
Northville, MI 48167  
248.308.3331

GRISSIM METZ ANDRIESE  
LANDSCAPE ARCHITECT

15000 Edward N Hines Drive, Suite A  
Plymouth, MI 48170  
248.347.7010

PROJECT NUMBER: 20090

DATE: 12/14/2021

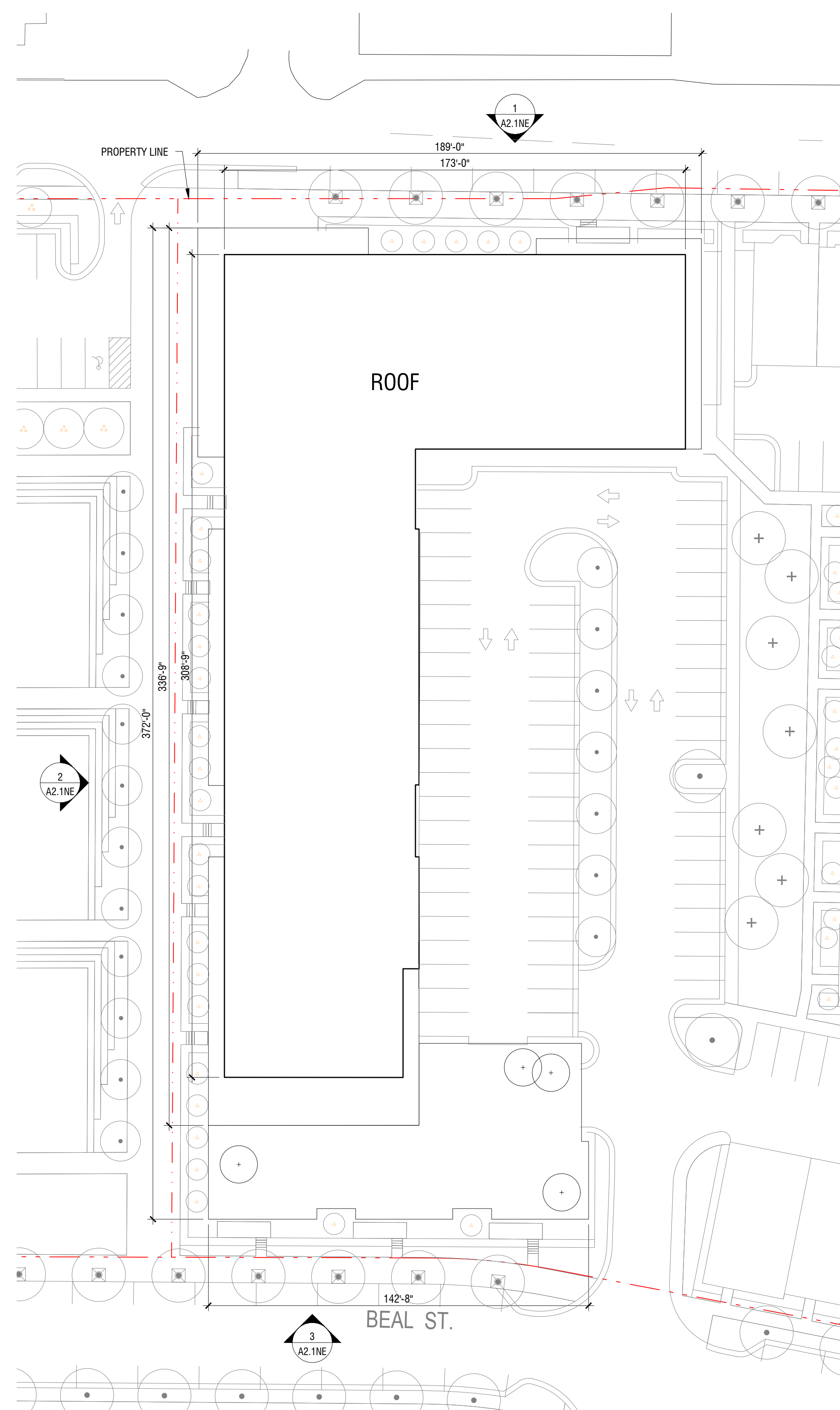
REVISIONS:  
12/14/2021 Preliminary Site  
Plan Approval

SCALE: 1" = 30'-0"

DRAWING NAME:  
**NORTHEAST SITE  
ROOF LEVEL  
FLOOR PLAN**

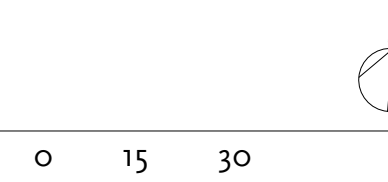
DRAWING NUMBER:

**A1.6NE**



**1** NORTHEAST SITE - ROOF LEVEL

SCALE: 1" = 30'-0"





**THE DOWNS**  
Northville, Michigan

HUNTER PASTEUR, NORTHVILLE LLC  
OWNER  
32300 Northwestern Hwy  
Suite 230  
Farmington Hills, MI 48334

NEUMANN SMITH ARCHITECTURE  
ARCHITECT OF RECORD  
400 Galleria Officecentre Suite 555  
Southfield, MI 48034  
248.352.8310

SEIBER KEAST ENGINEERING  
CIVIL ENGINEER  
100 MainCentre Suite 10  
Northville, MI 48167  
248.308.3331

GRISSIM METZ ANDRIESE  
LANDSCAPE ARCHITECT  
15000 Edward N Hines Drive, Suite A  
Plymouth, MI 48170  
248.347.7010

PROJECT NUMBER: 20090

DATE: 12/14/2021

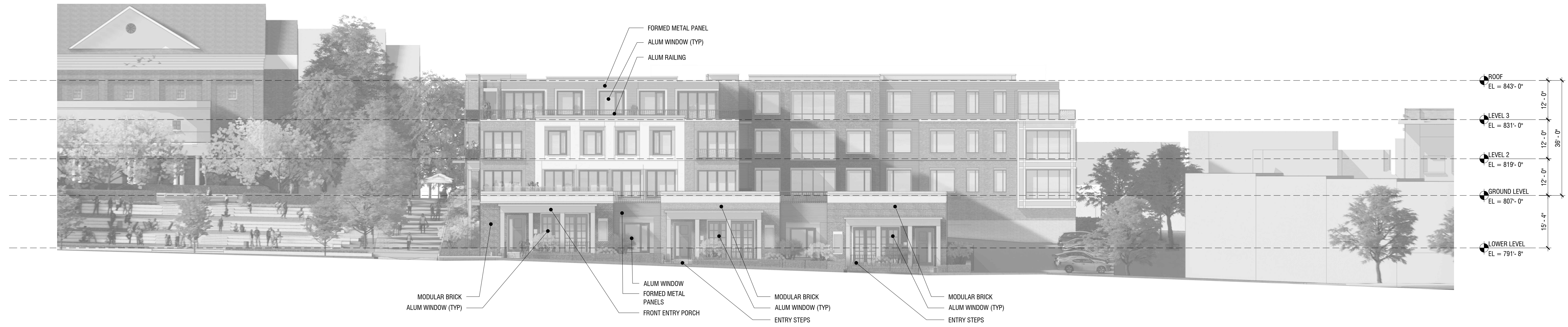
REVISIONS:  
12/14/2021 Preliminary Site  
Plan Approval

SCALE: 1/16" = 1'-0"

DRAWING NAME:  
**NORTHEAST SITE  
PUBLIC WAY  
ELEVATIONS**

DRAWING NUMBER:

**A2.1 NE**



**3** NORTHEAST SITE - SOUTH (BEAL STREET) ELEVATION

SCALE: 1/16" = 1'-0"



**2** NORTHEAST SITE - WEST (HUTTON STREET) ELEVATION

SCALE: 1/16" = 1'-0"



**1** NORTHEAST SITE - NORTH (CADY STREET) ELEVATION

SCALE: 1/16" = 1'-0"